

*DAMAC*



CANAL  
HEIGHTS

de GRISOGONO

A CENTURIES-OLD  
TREASURE TRANSFORMED.



A PEARL SO RARE, LIKE  
A BLUE MOON RISING  
FROM THE OCEAN.







NOW, A GLITTERING,  
MULTIFACETED  
LIFESTYLE AWAITS.





THIS IS THE SHIMMERING SEQUEL TO CHIC TOWER.  
WELCOME TO CANAL HEIGHTS.





LUXURIOUS  
WATERFRONT  
LIVING

AN EXQUISITELY LUSTROUS PROPERTY BESIDE THE DUBAI CANAL  
THAT STANDS OUT AND FEELS RIGHT AT HOME.  
CANAL HEIGHTS EMBODIES THE BEAUTY AND PERFECTION OF ONE  
OF NATURE'S MOST WONDROUS CREATIONS...THE BLUE PEARL.





FIND IT IN THE SPIRITED FINANCIAL DISTRICT  
OF BUSINESS BAY, SURROUNDED BY OTHER  
STYLISH HIGH RISES, TRENDY APARTMENT  
BUILDINGS AND POPULAR HOTELS.









A GLITTERING ICON



GLISTENING WITH GRAVITAS, ITS SLEEK, STYLISH AND SHIMMERING EXTERIORS PRESENT A WONDERFULLY DYNAMIC FORM THAT SHINES IN THE DAY AND SPARKLES AT NIGHT.





THE  
ESSENCE OF  
IRRIDESCENCE

LIKE ALL BEAUTY, IT'S NOT JUST WHAT'S ON  
THE OUTSIDE, BUT ALSO WHAT'S ON THE  
INSIDE THAT COUNTS.





ENTER THE CANAL HEIGHTS LOBBY AND IMMERSE YOURSELF IN A SHIFTING, OTHERWORLDLY GLOW, AS YOU'RE SURROUNDED BY MAGNIFICENT COLOURS, EFFERVESCENT TEXTURES, AND FLUID FORMS THAT REFLECT A DAMAC-STYLED LUXURY.























NATURAL ELEMENTS COME ALIVE IN CANAL HEIGHTS WITH A DIVERSE RANGE OF ASTONISHING AMENITIES. TRANQUILITY, FUN, AND A COMPLETE SENSE OF WELLBEING MAKE THIS STUNNING PROPERTY A TRUE GEM OF VIBRANT LIVING.











## YEAR-ROUND SERENITY

FOR A ONE-OF-A-KIND EXPERIENCE STEP INTO  
INNER WELLNESS WITH THE CANAL HEIGHTS YOGA  
DOMES. FROM MEDITATION TO ROMANTIC MOMENTS,  
THESE MULTIPURPOSE MARVELS WILL ALSO PROVIDE  
THE PERFECT SETTING FOR INTIMATE DINING  
EXPERIENCES AND PRIVATE PARTIES.













WATER FEATURES AND THE ESSENCE OF THE BLUE PEARL CREATE A TIMELESS, FLOWING ENERGY THROUGHOUT THE PROPERTY.



## SWIM WITH HISTORY

PREPARE TO BE AMAZED, AS CANAL HEIGHTS BRINGS TOGETHER HISTORY AND ENTERTAINMENT, GIVING YOU THE OPPORTUNITY TO SNORKEL IN A ONE-OF-A-KIND, AWE-INSPIRING UNDERWATER PEARL MUSEUM.











# EMBRACE YOUR INNER EXPLORER

AT CANAL HEIGHTS, GO IN SEARCH OF REAL PEARLS IN  
A BEAUTIFUL, SHELL-SHAPED POOL, AND IF YOU PREFER  
A MORE RELAXED DAY, SIMPLY LOUNGE ON ITS EDGE  
AMIDST THE SERENE, RHYTHMIC SOUNDS OF WAVES.





# DIVE INTO LUXURY

FOR THOSE THAT WANT TO SPEND THEIR TIME IN THE WATER STAYING FIT AND HEALTHY, TAKE TO THE CANAL HEIGHTS INFINITY LAP POOL FOR YOUR DAILY LENGTHS OR SOME FUN IN A ZORB BALL.

AND WITH ITS BEAUTIFUL, IRIDESCENT-TILED BASE, EACH SWIM CAN FEEL AS UNIQUE AS YOU ARE.





FLOOR PLANS



# STUDIO

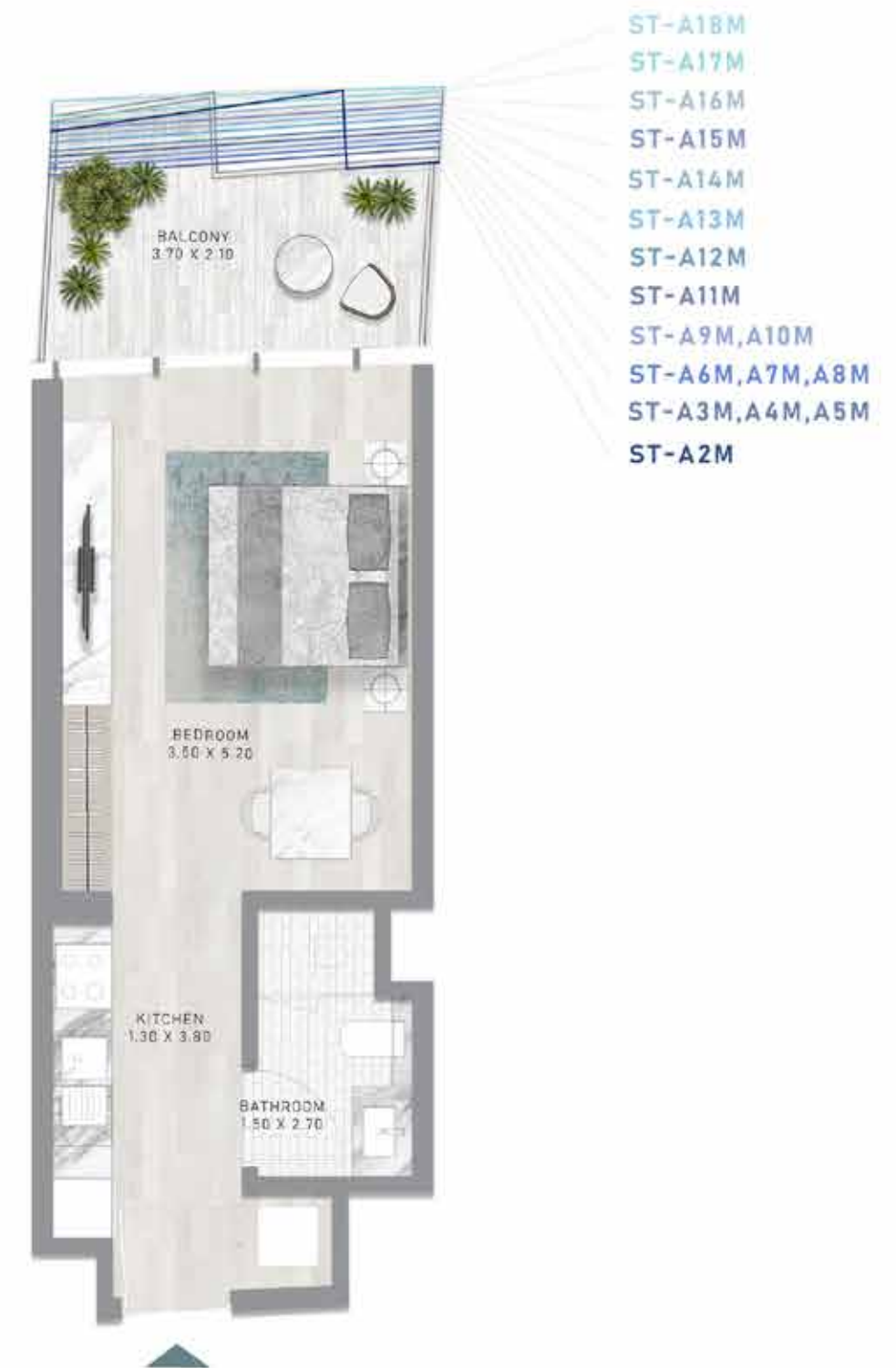
TYPES A1 - A18



LEVELS 2-19

# STUDIO

TYPES A1 M - A18 M



LEVELS 2-19



# STUDIO

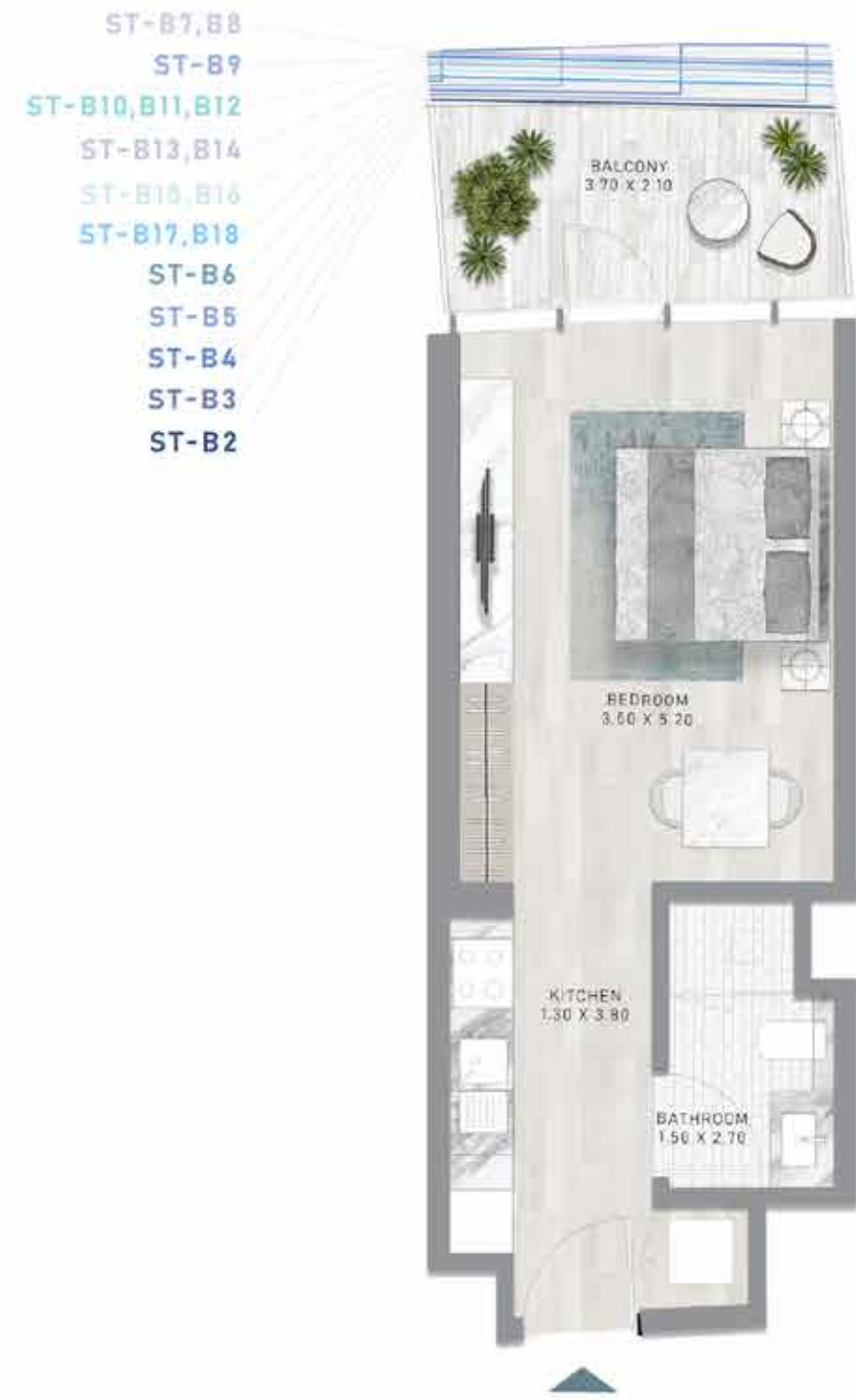
TYPES B1 - B18

# STUDIO

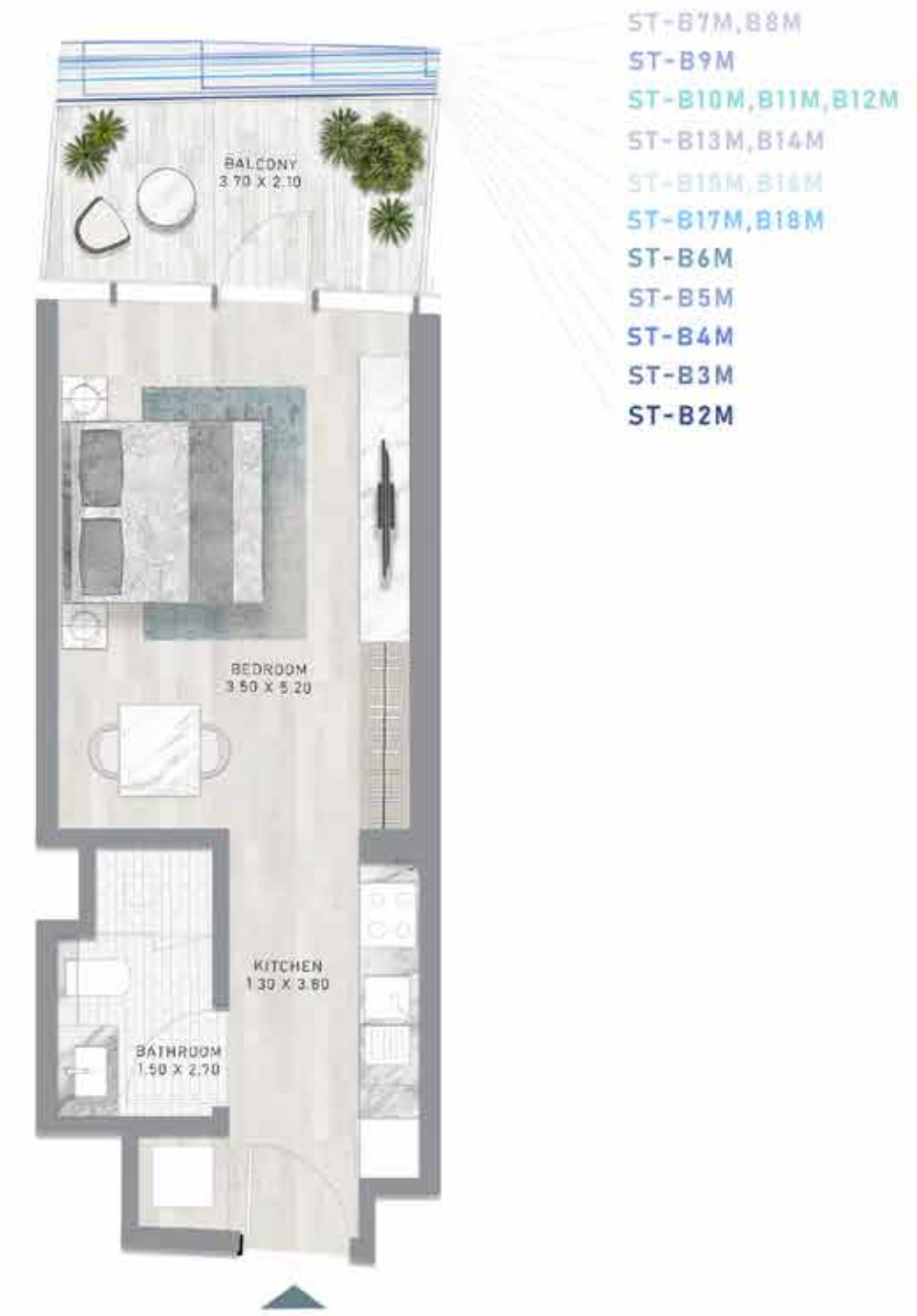
TYPES B1 M - B18 M

CANAL HEIGHTS BY DE GRISOGONO

CANAL HEIGHTS BY DE GRISOGONO



LEVELS 2-19



LEVELS 2-19



# STUDIO

TYPES C1 - C18

# STUDIO

TYPES C1 M - C18 M

- ST-C1,C2
- ST-C3,C4,C5,C6
- ST-C7
- ST-C8
- ST-C9
- ST-C10,C11
- ST-C12,C13
- ST-C14
- ST-C15
- ST-C16
- ST-C17
- ST-C18



- ST-C1M,C2M
- ST-C3M,C4M,C5M,C6M
- ST-C7M
- ST-C8M
- ST-C9M
- ST-C10M,C11M
- ST-C12M,C13M
- ST-C14M
- ST-C15M
- ST-C16M
- ST-C17M
- ST-C18M



LEVELS 2-19



LEVELS 2-19



# STUDIO

TYPES D1 - D18

- ST-D1, D2, D3
- ST-D4, D5, D6
- ST-D7, D8, D9
- ST-D10
- ST-D11
- ST-D12
- ST-D13
- ST-D14
- ST-D15
- ST-D16
- ST-D17
- ST-D18



LEVELS 2-19

# STUDIO

TYPES D1 M - D18 M

- ST-D1M, D2M, D3M
- ST-D4M, D5M, D6M
- ST-D7M, D8M, D9M
- ST-D10M
- ST-D11M
- ST-D12M
- ST-D13M
- ST-D14M
- ST-D15M
- ST-D16M
- ST-D17M
- ST-D18M



LEVELS 2-19

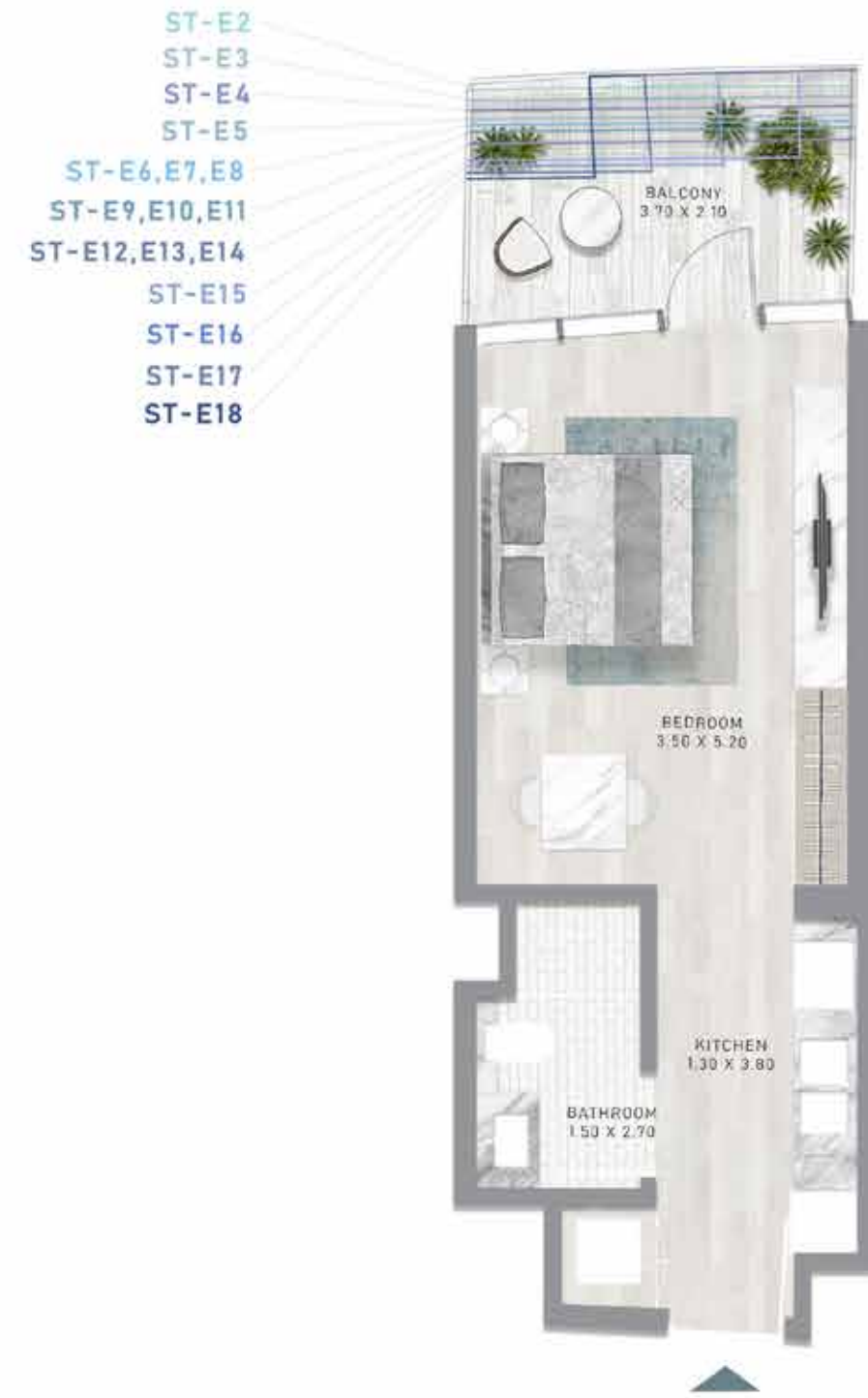


# STUDIO

TYPES E1 - E18

# STUDIO

TYPES E1 M - E18 M



LEVELS 2-19



LEVELS 2-19



# STUDIO

TYPES F1 - F5



LEVELS 27-31

# STUDIO

TYPES F1 M - F5 M

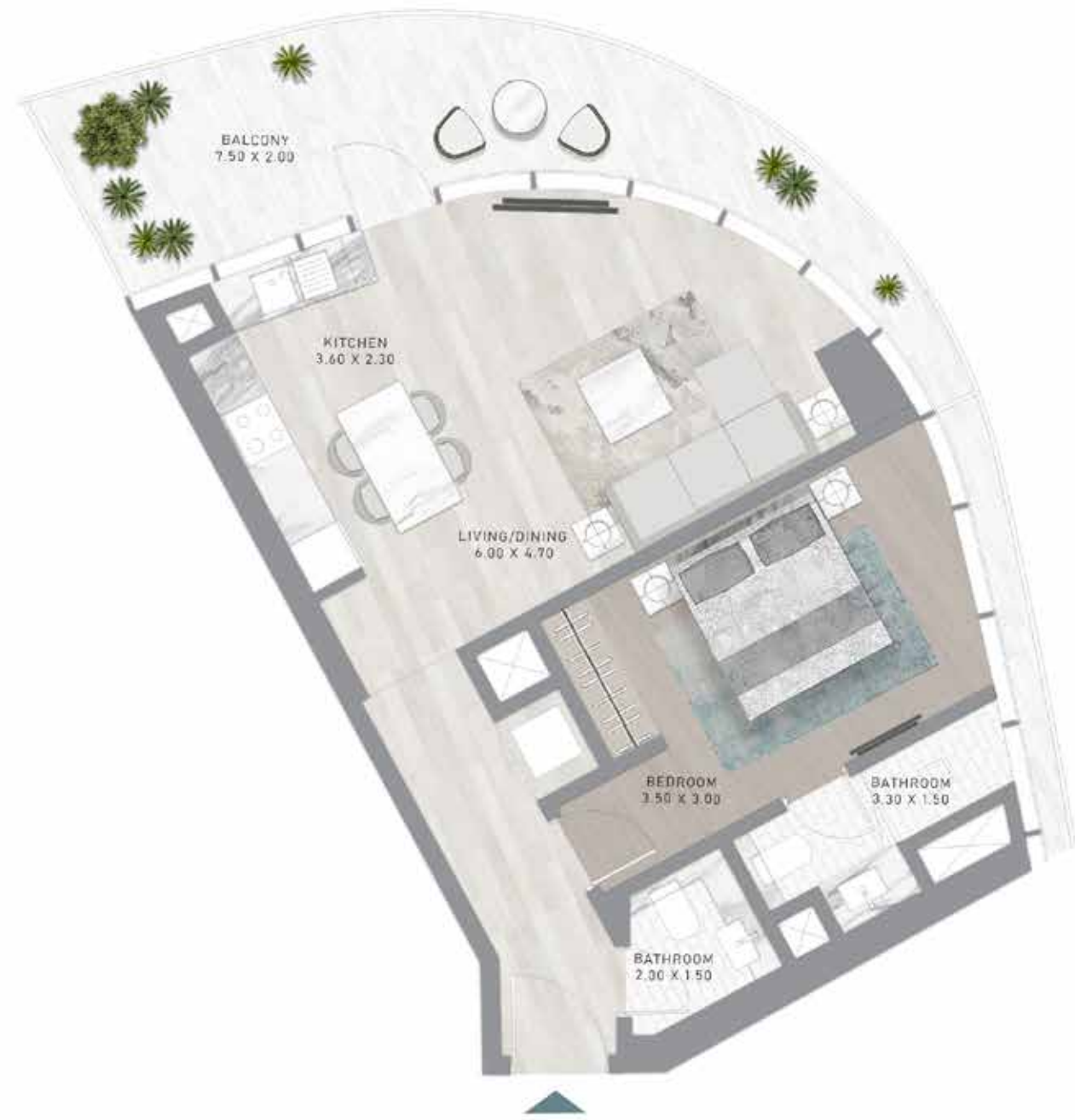


LEVELS 27-31



# 1-BEDROOM

TYPE A1



LEVEL 2

# 1-BEDROOM

TYPE A1-M



LEVEL 2



# 1-BEDROOM

TYPE A2



LEVEL 3

# 1-BEDROOM

TYPE A2-M



LEVEL 3

CANAL HEIGHTS BY DE GRISOGONO

CANAL HEIGHTS BY DE GRISOGONO



# 1-BEDROOM

TYPE A3



LEVEL 4

# 1-BEDROOM

TYPE A3-M

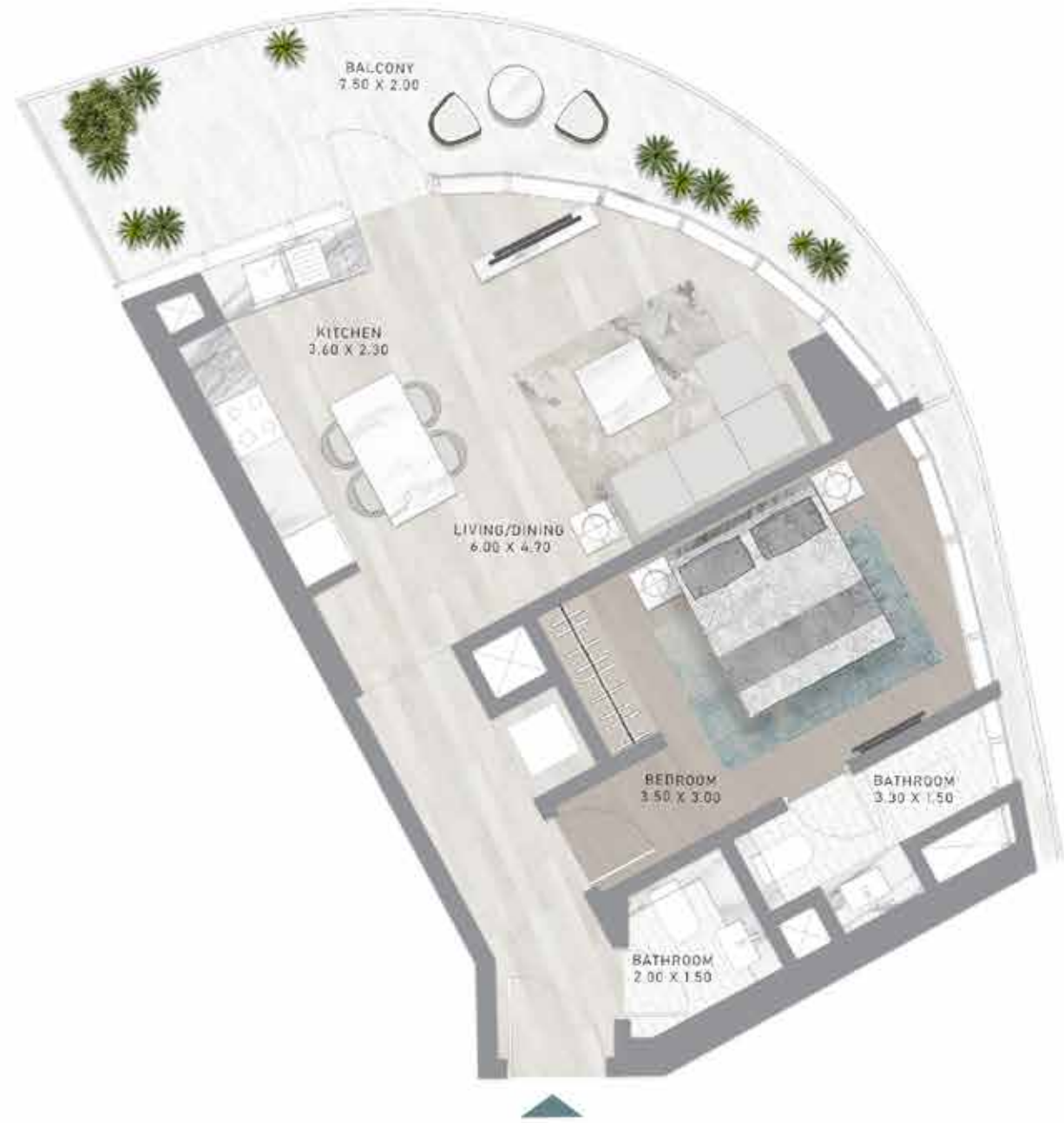


LEVEL 4



# 1-BEDROOM

TYPE A4



LEVEL 5

# 1-BEDROOM

TYPE A4-M

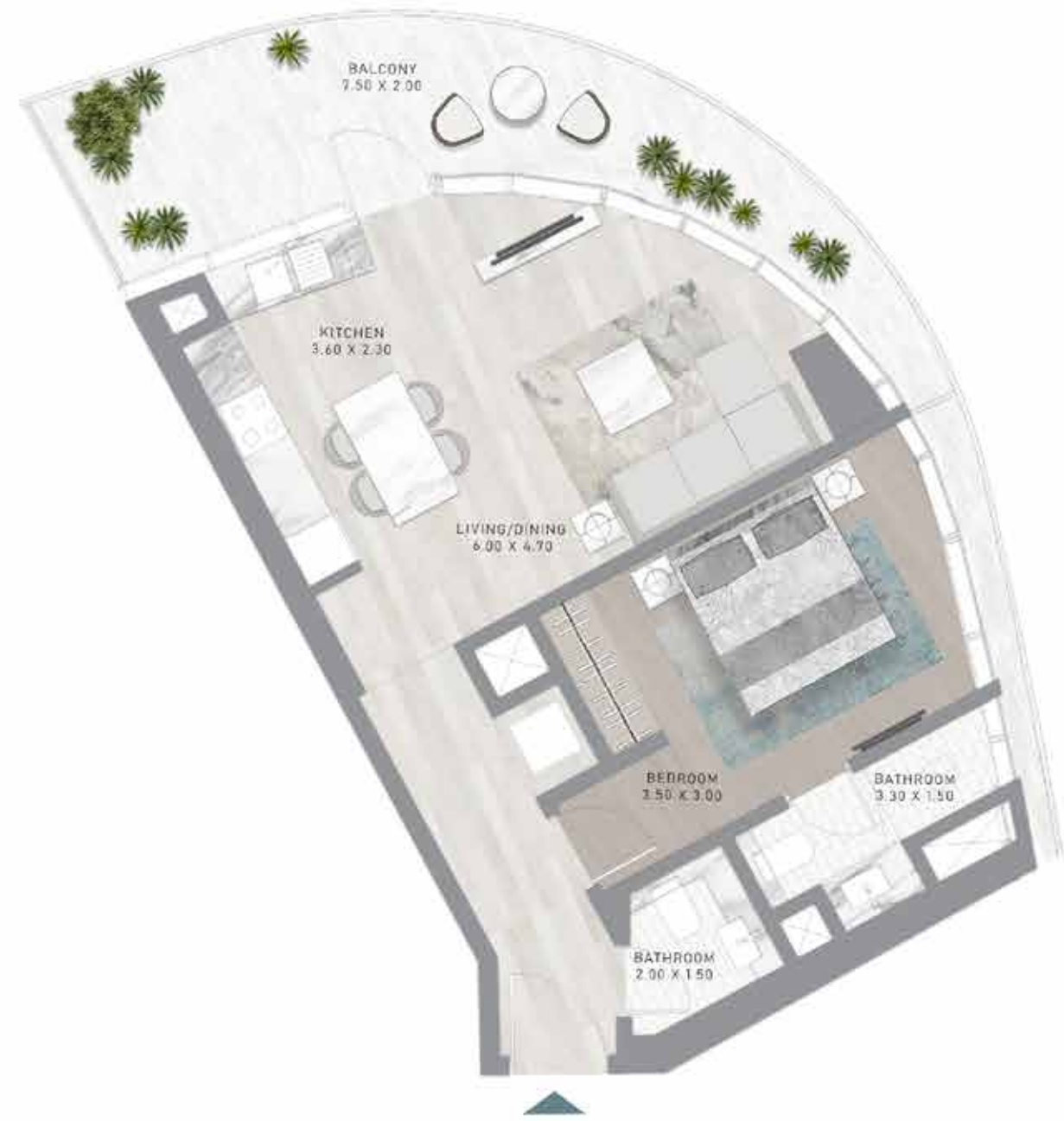


LEVEL 5



# 1-BEDROOM

TYPE A5



LEVEL 6

# 1-BEDROOM

TYPE A5-M

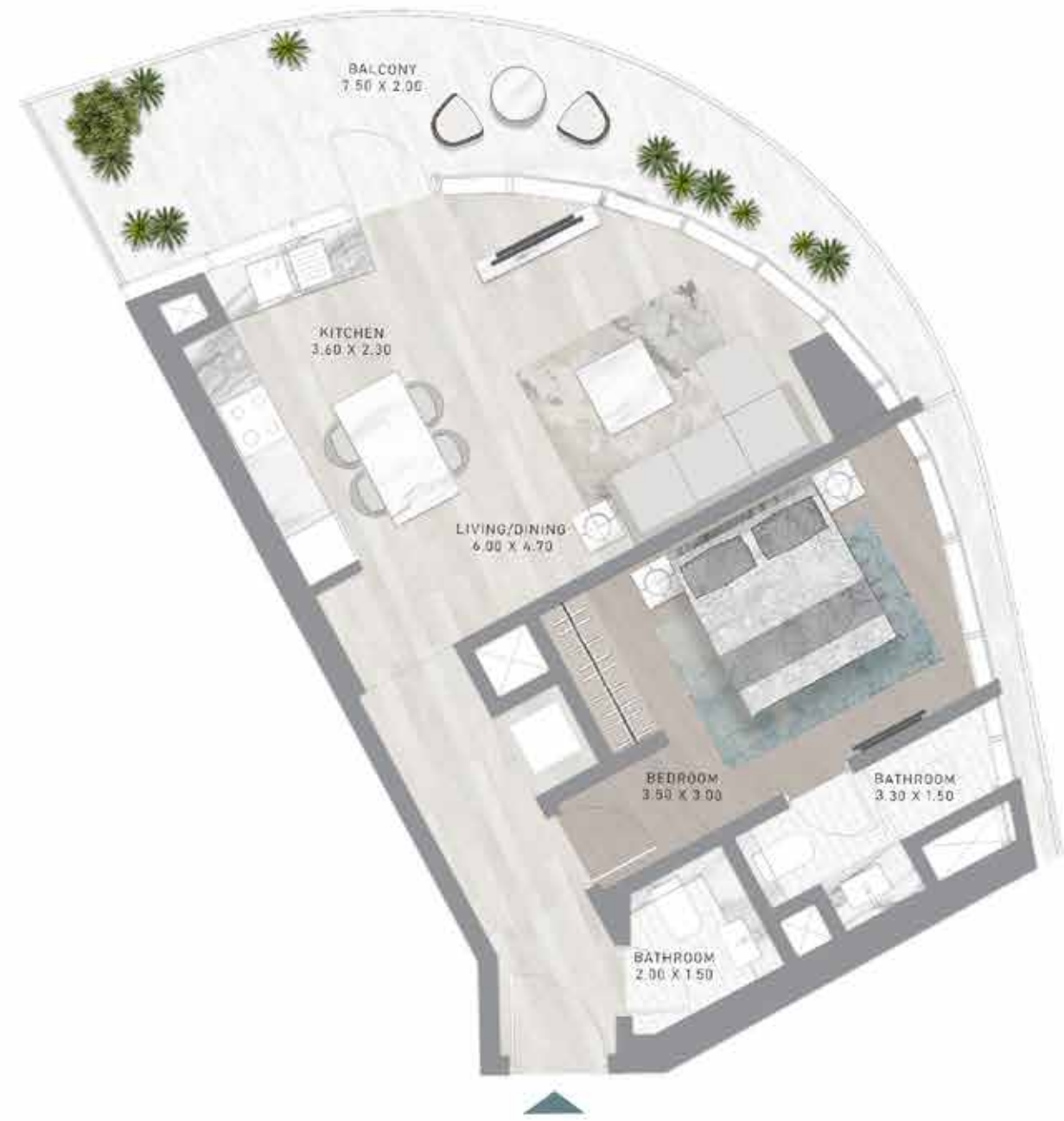


LEVEL 6



# 1-BEDROOM

TYPE A6



LEVEL 7

# 1-BEDROOM

TYPE A6-M

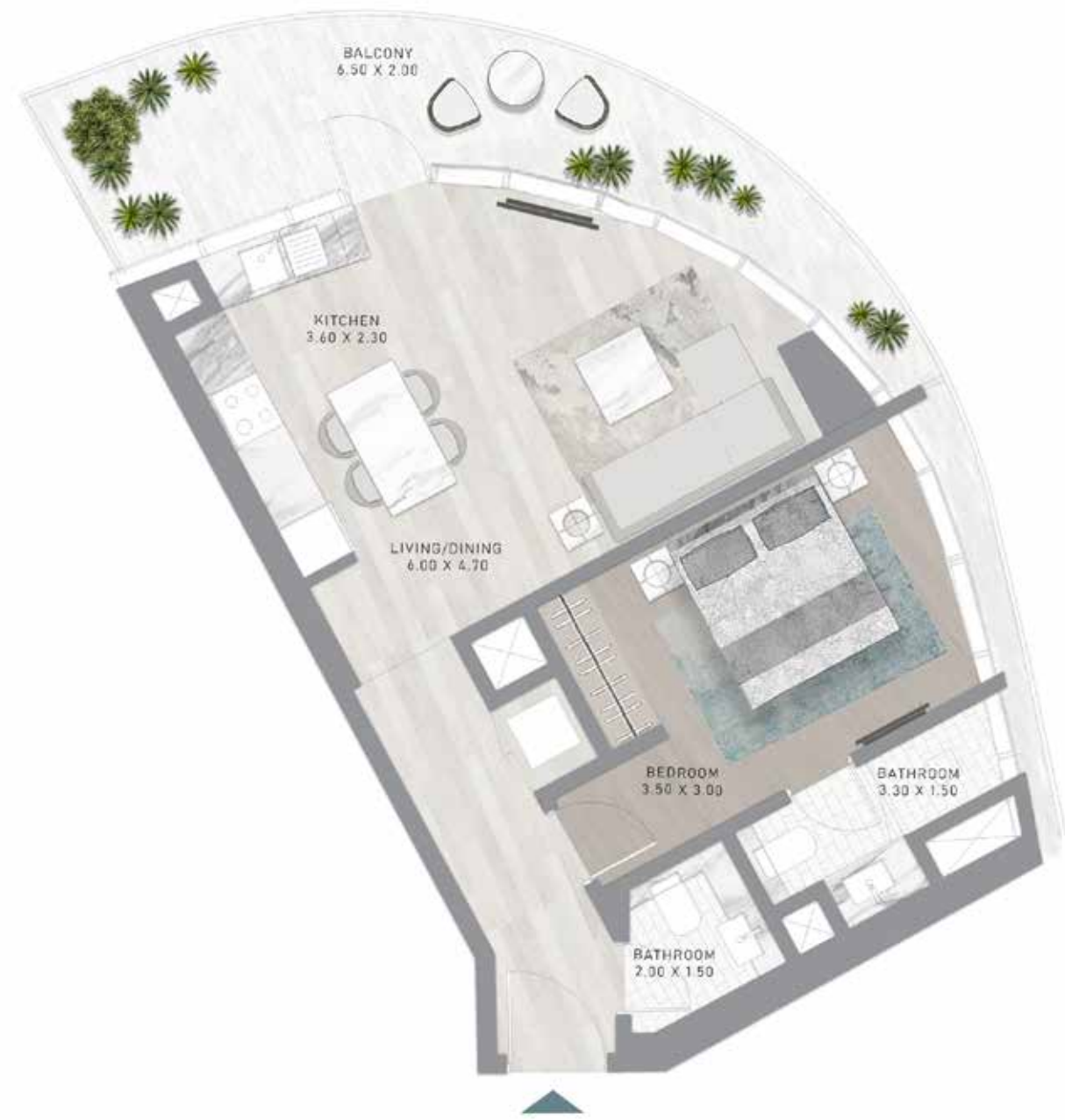


LEVEL 7



# 1-BEDROOM

TYPE A7



LEVEL 8

# 1-BEDROOM

TYPE A7-M

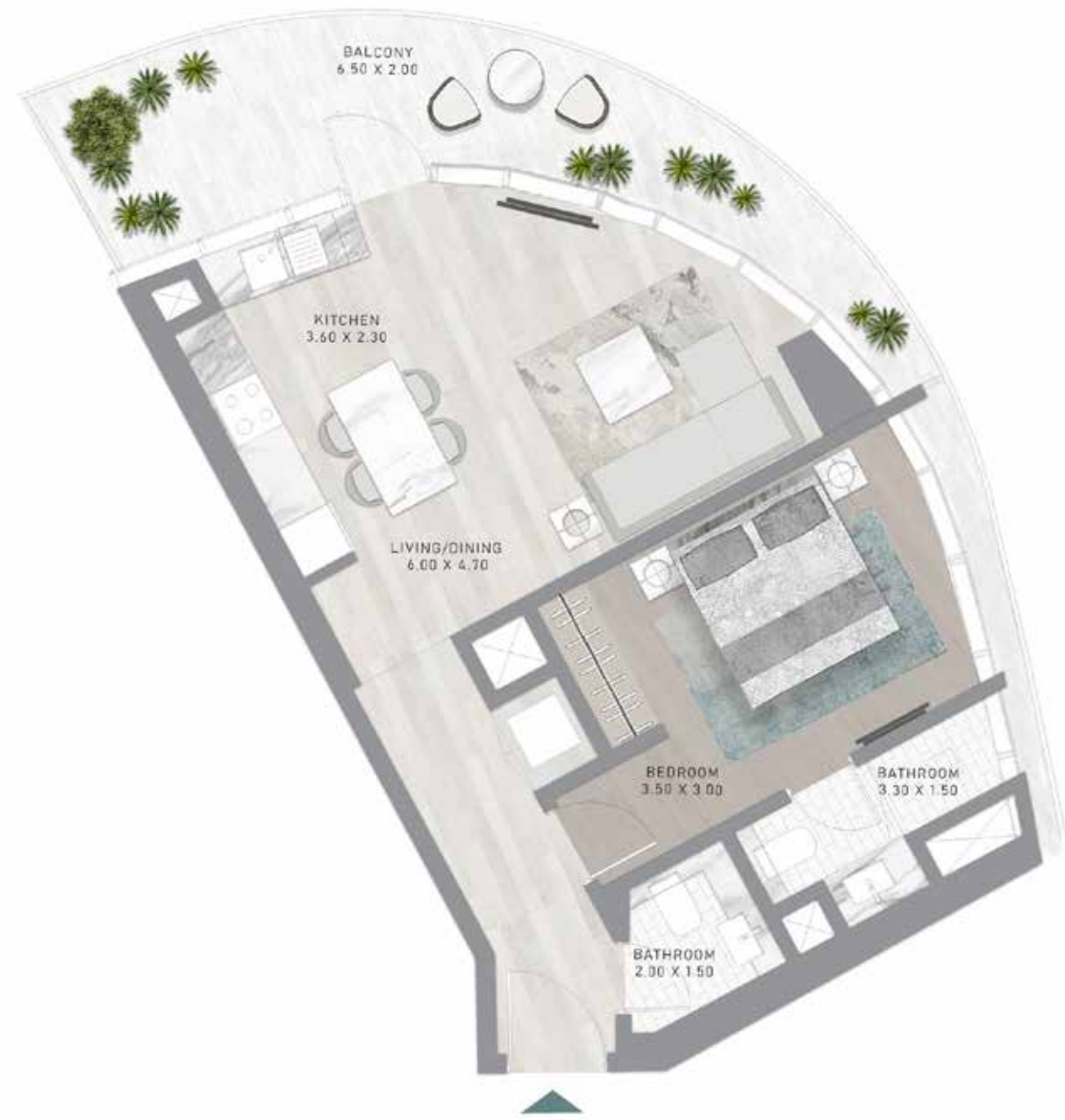


LEVEL 8



# 1-BEDROOM

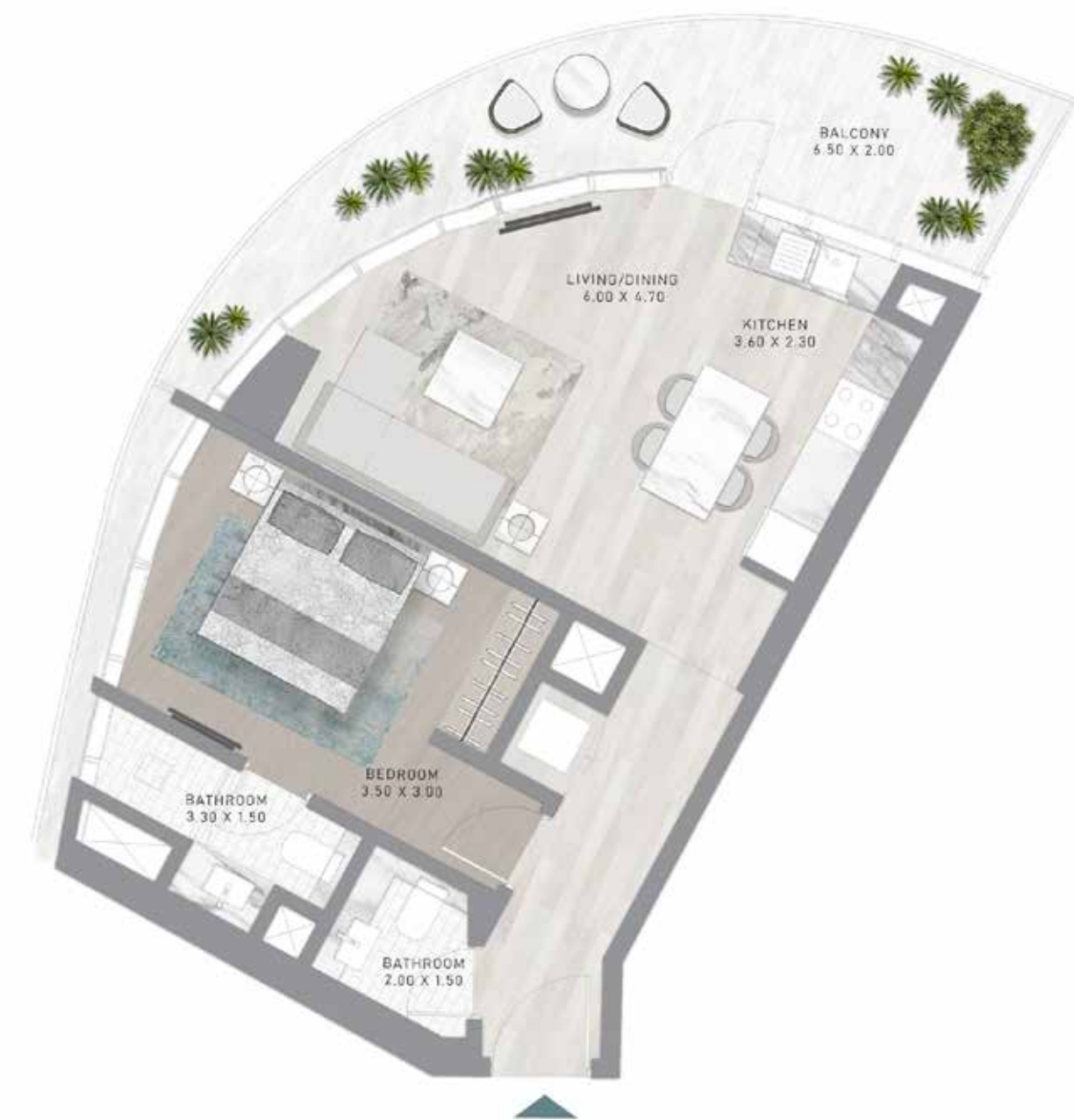
TYPE A8



LEVEL 9

# 1-BEDROOM

TYPE A8-M

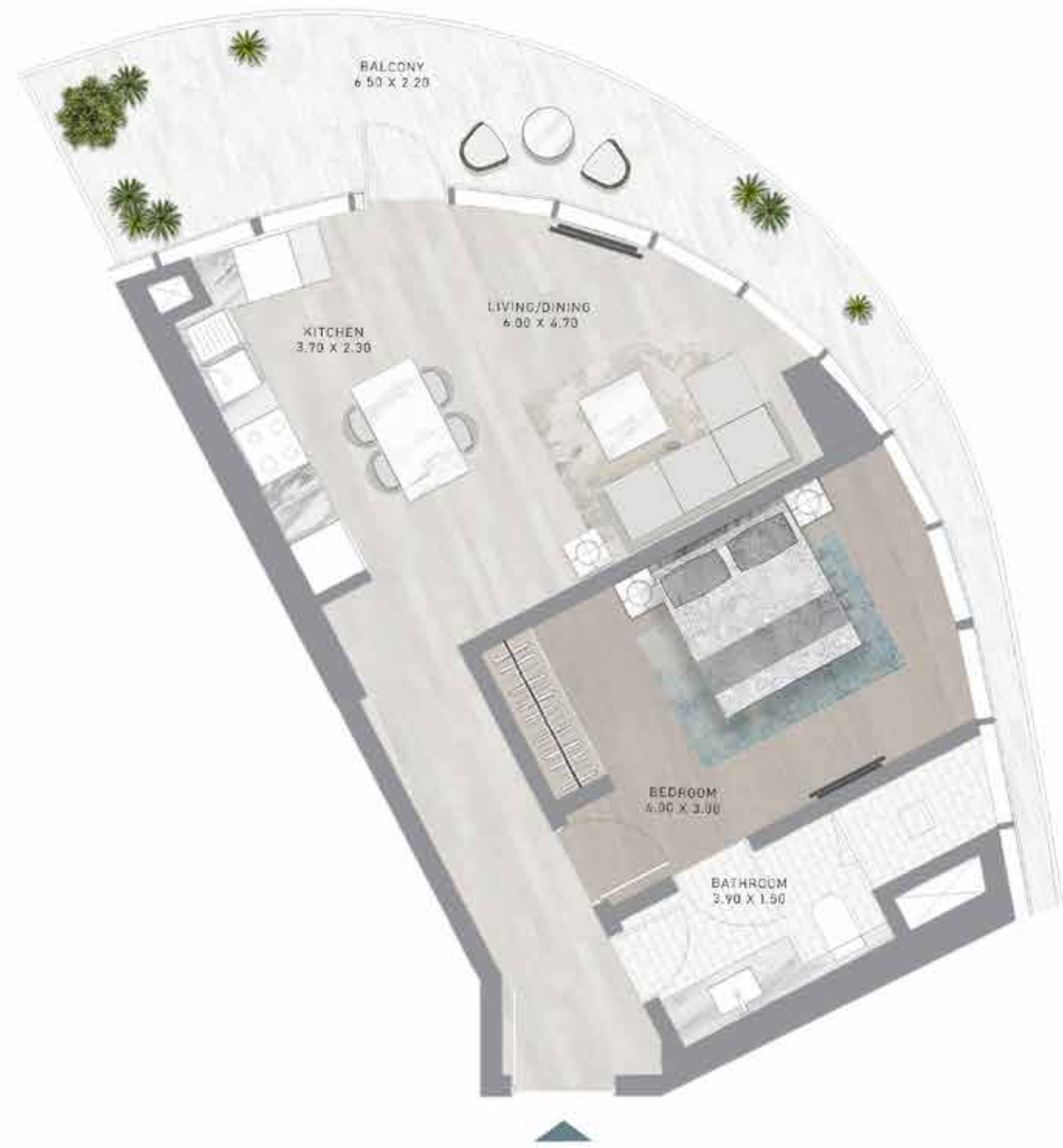


LEVEL 9



# 1-BEDROOM

TYPE A9



LEVEL 10

# 1-BEDROOM

TYPE A9-M

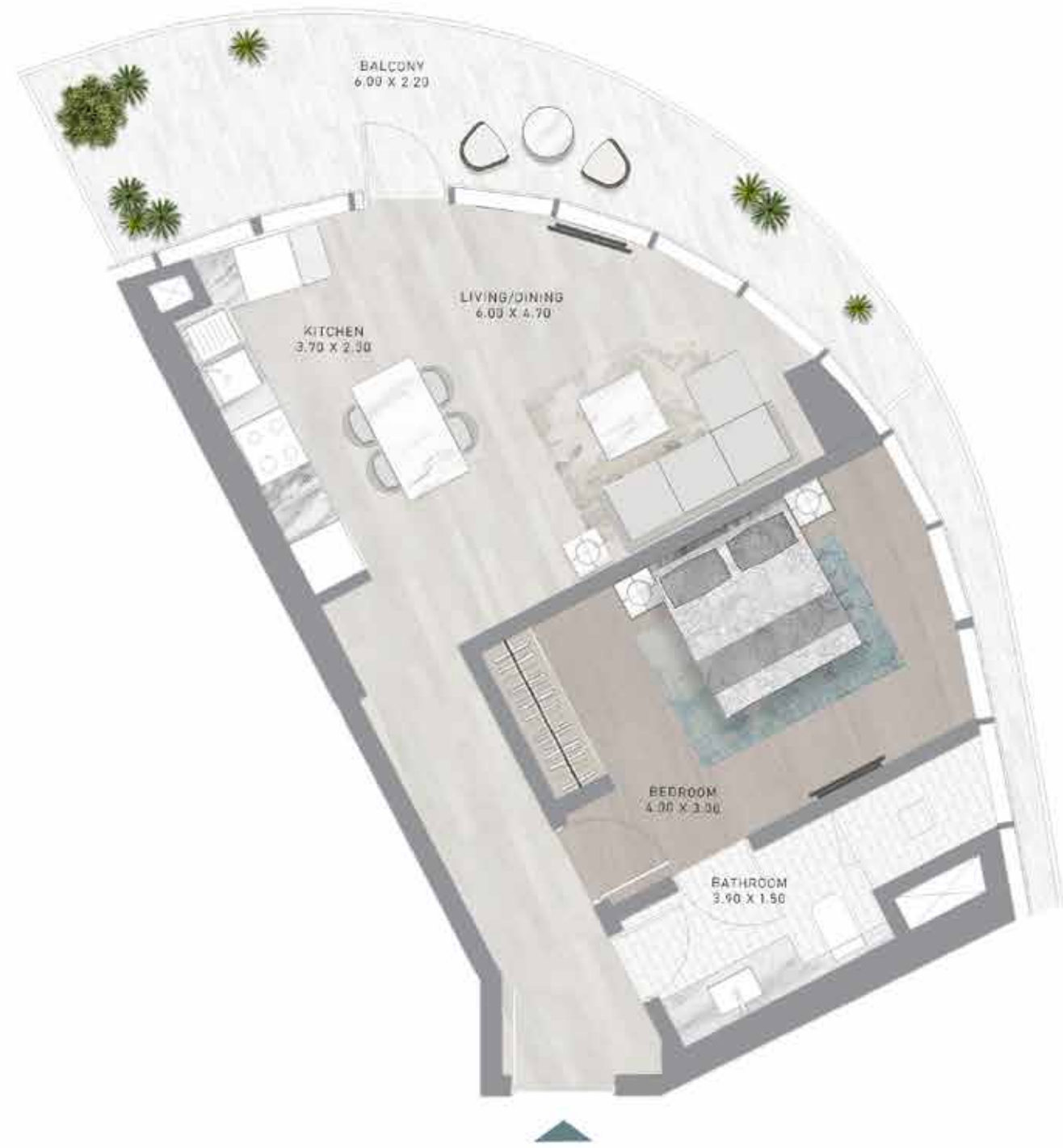


LEVEL 10



# 1-BEDROOM

TYPE A10



LEVEL 11

# 1-BEDROOM

TYPE A10-M

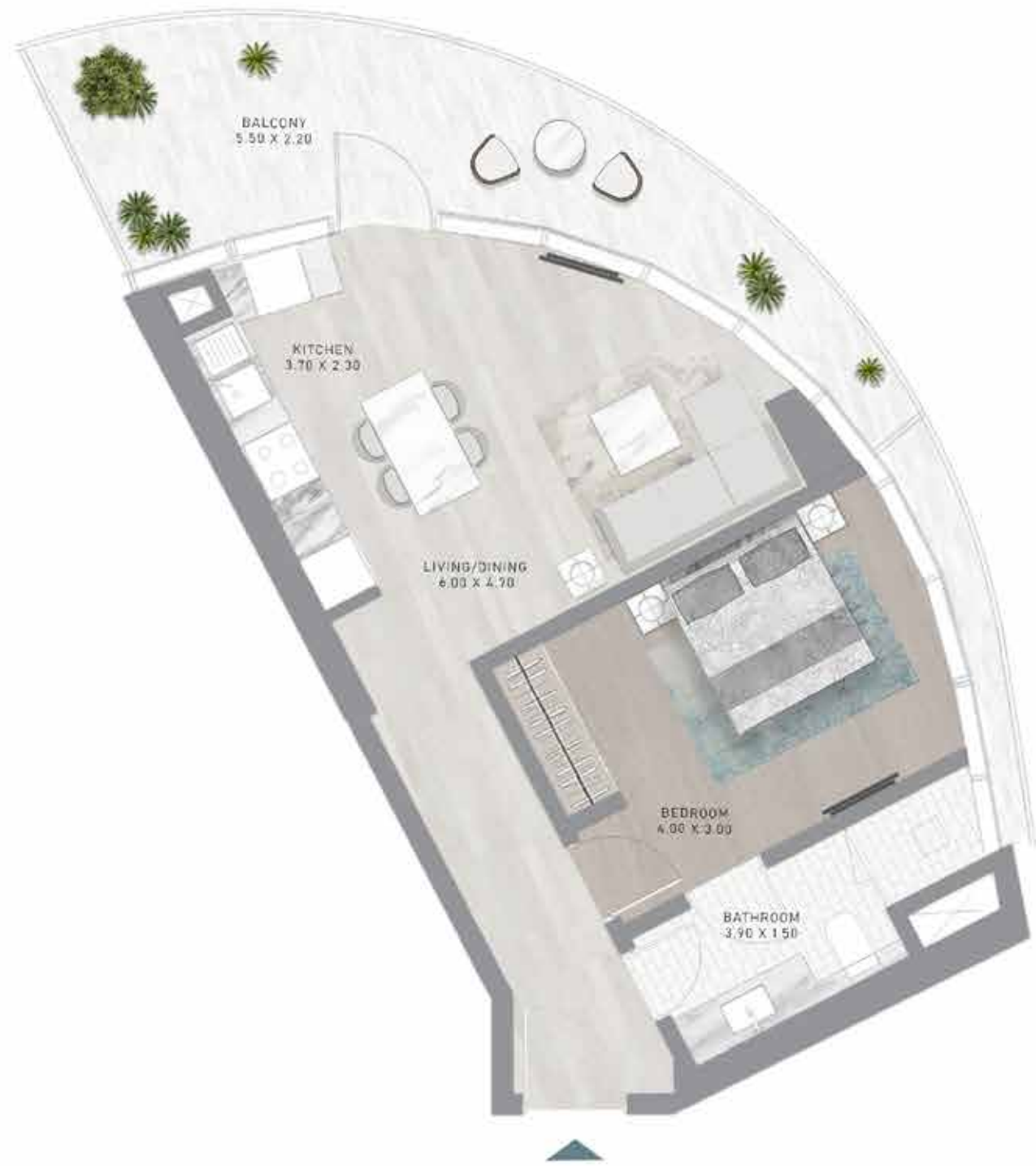


LEVEL 11



# 1-BEDROOM

TYPE A11



LEVEL 12

# 1-BEDROOM

TYPE A11-M

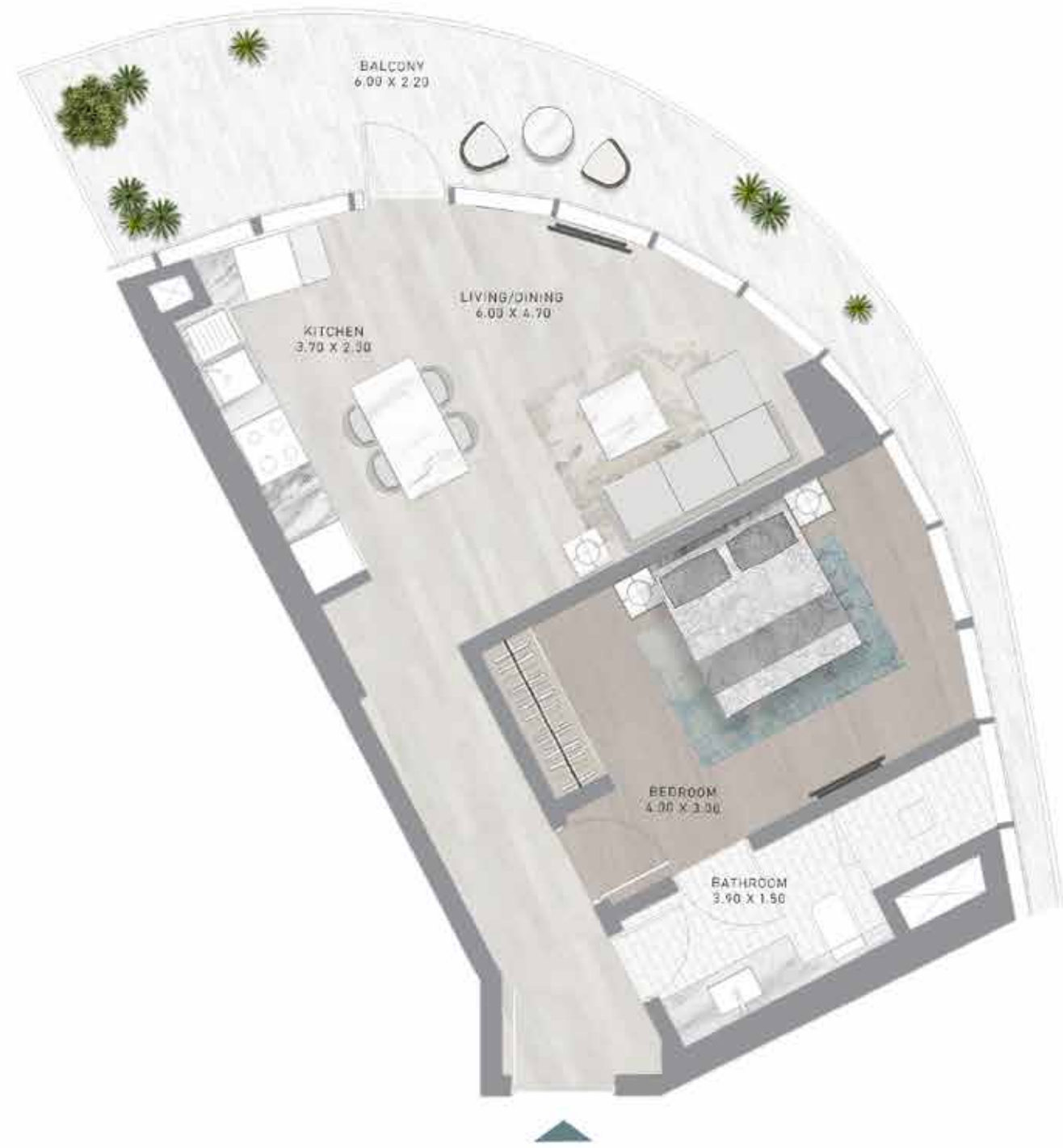


LEVEL 12



# 1-BEDROOM

TYPE A12



LEVEL 13

# 1-BEDROOM

TYPE A12-M

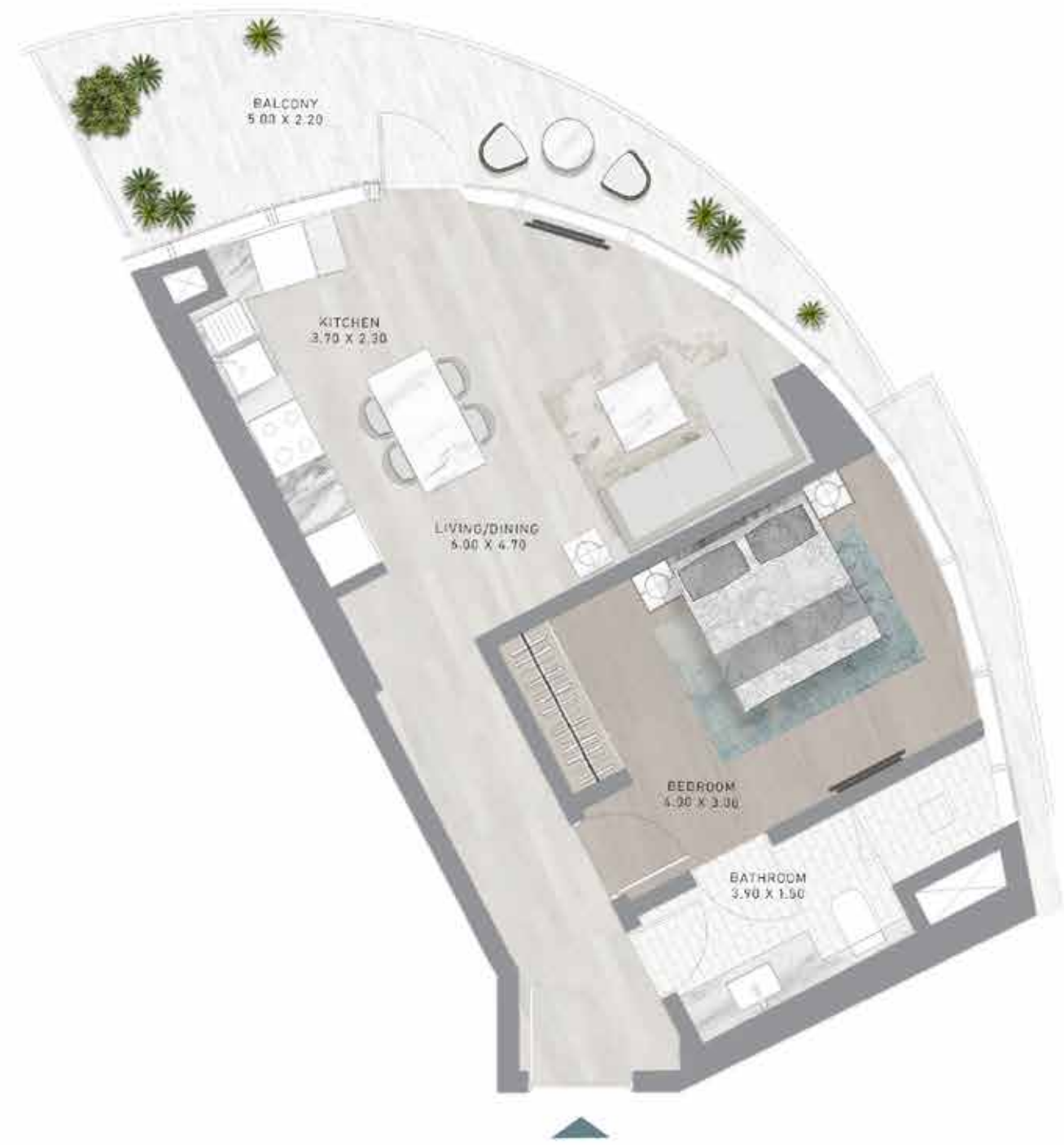


LEVEL 13



# 1-BEDROOM

TYPE A13



LEVEL 14

# 1-BEDROOM

TYPE A13-M



LEVEL 14



# 1-BEDROOM

TYPE A14



LEVEL 15

# 1-BEDROOM

TYPE A14-M

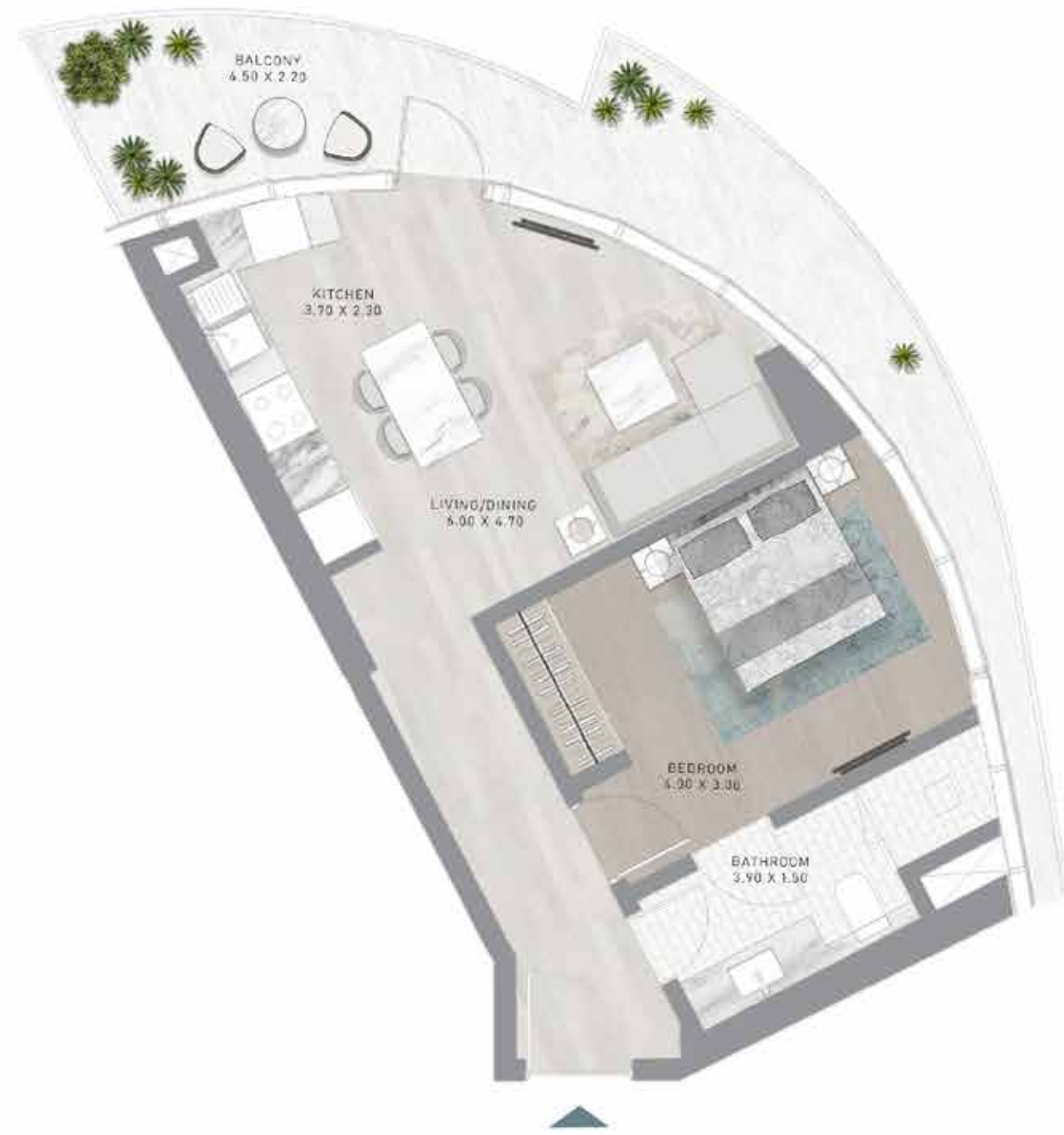


LEVEL 15



# 1-BEDROOM

TYPE A15



LEVEL 16

# 1-BEDROOM

TYPE A15-M

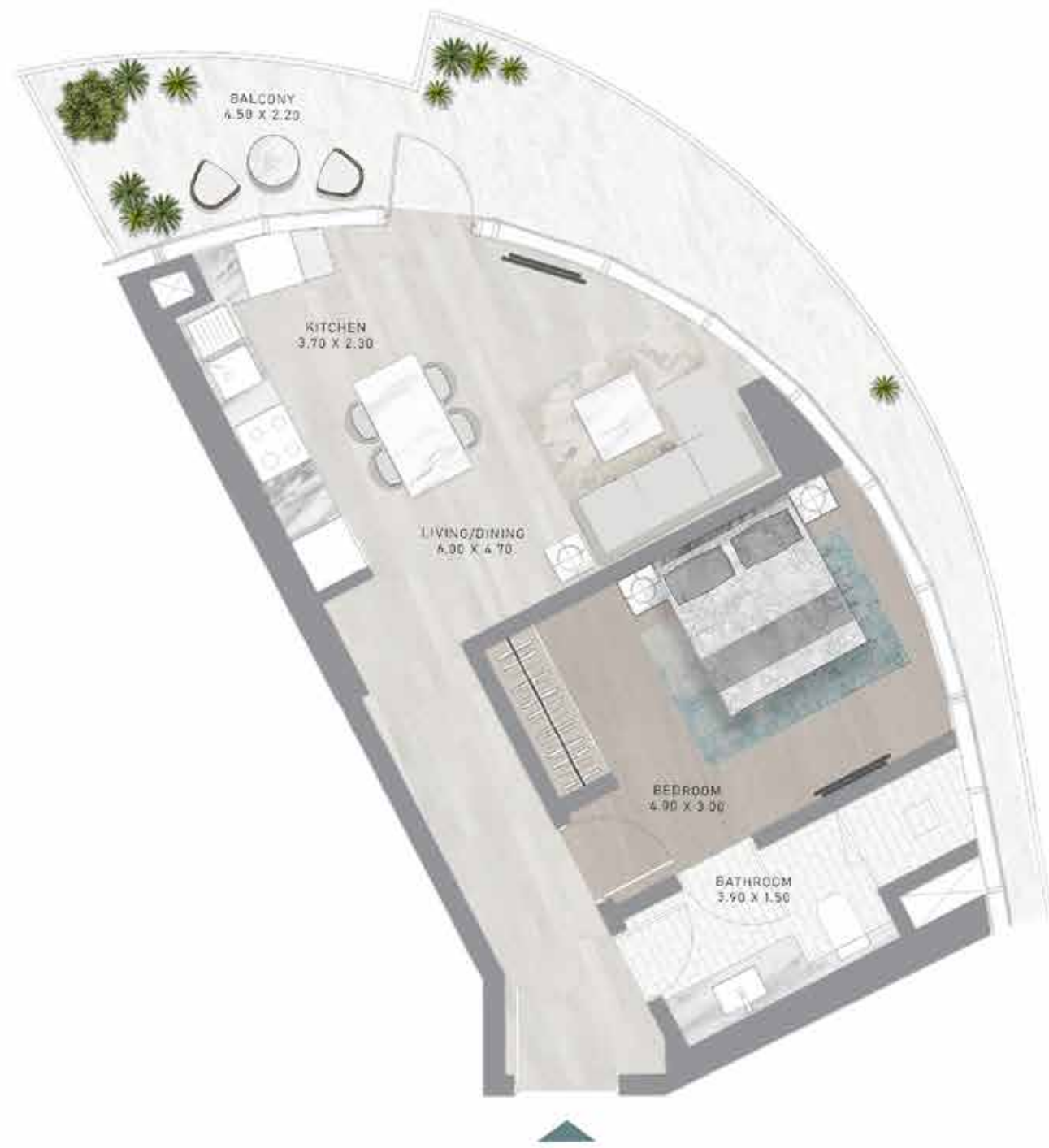


LEVEL 16



# 1-BEDROOM

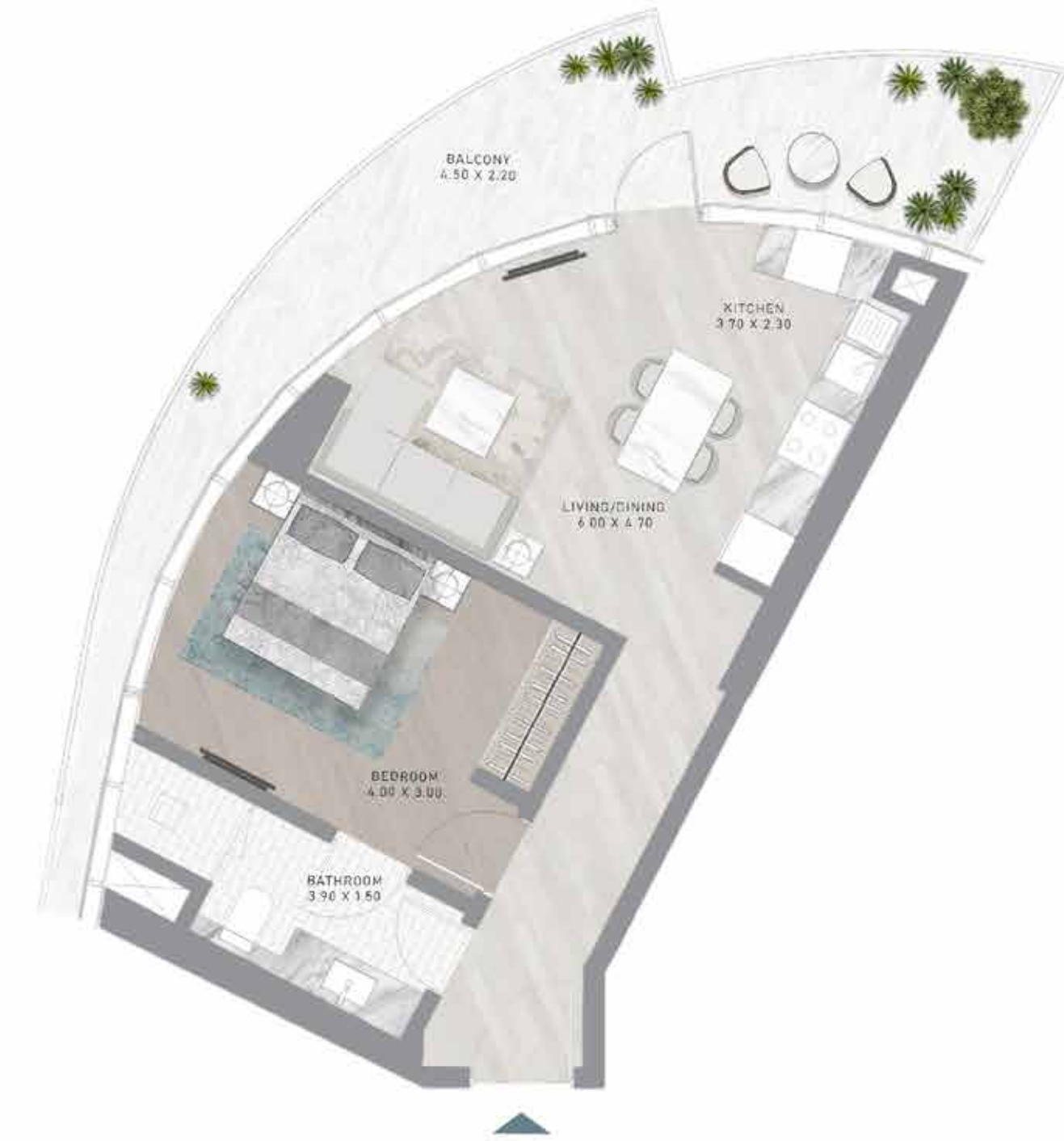
TYPE A16



LEVEL 17

# 1-BEDROOM

TYPE A16-M

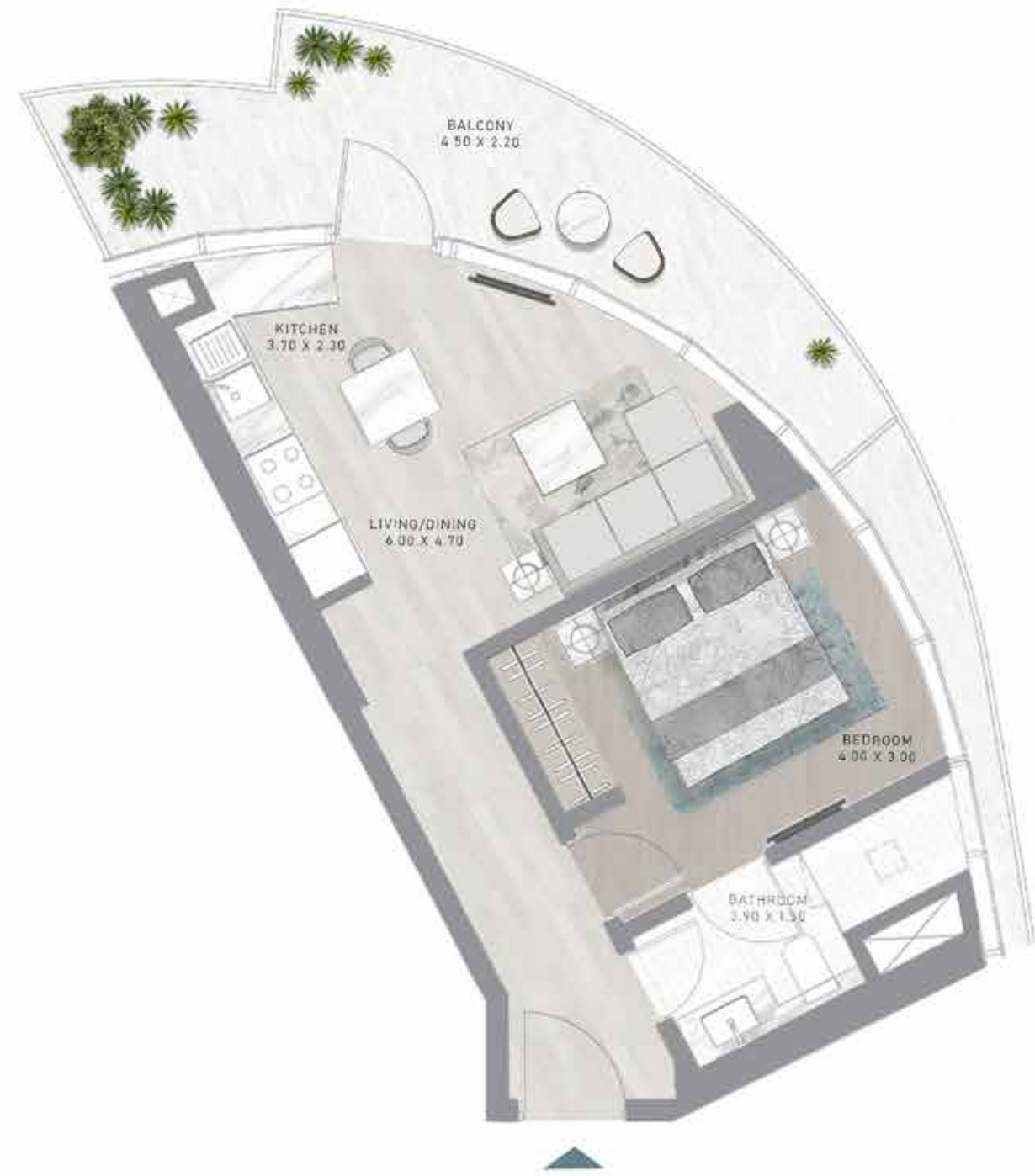


LEVEL 17



# 1-BEDROOM

TYPE A17



LEVEL 18

# 1-BEDROOM

TYPE A17-M

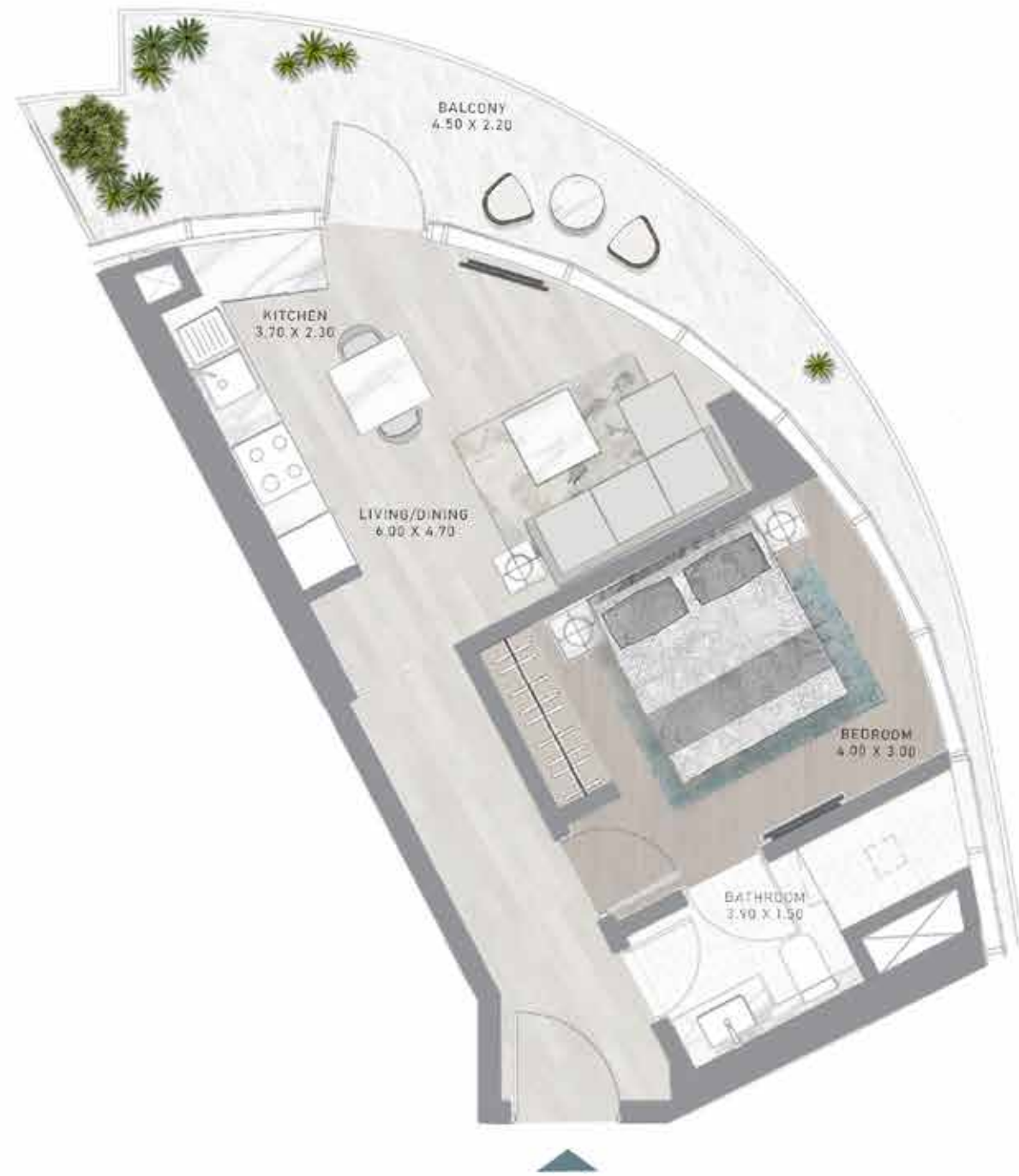


LEVEL 18



# 1-BEDROOM

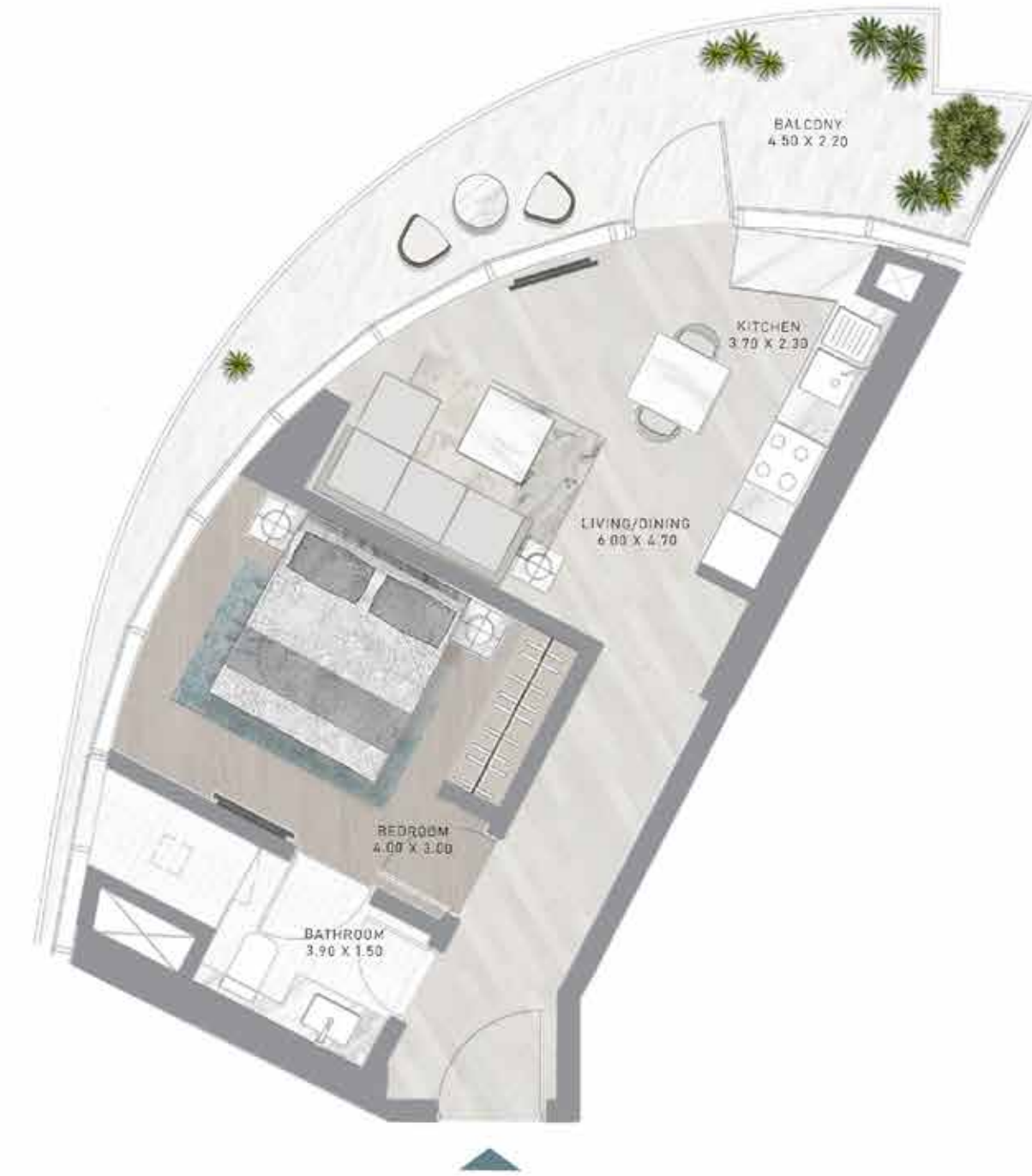
TYPE A18



LEVEL 19

# 1-BEDROOM

TYPE A18-M



LEVEL 19



# 1-BEDROOM

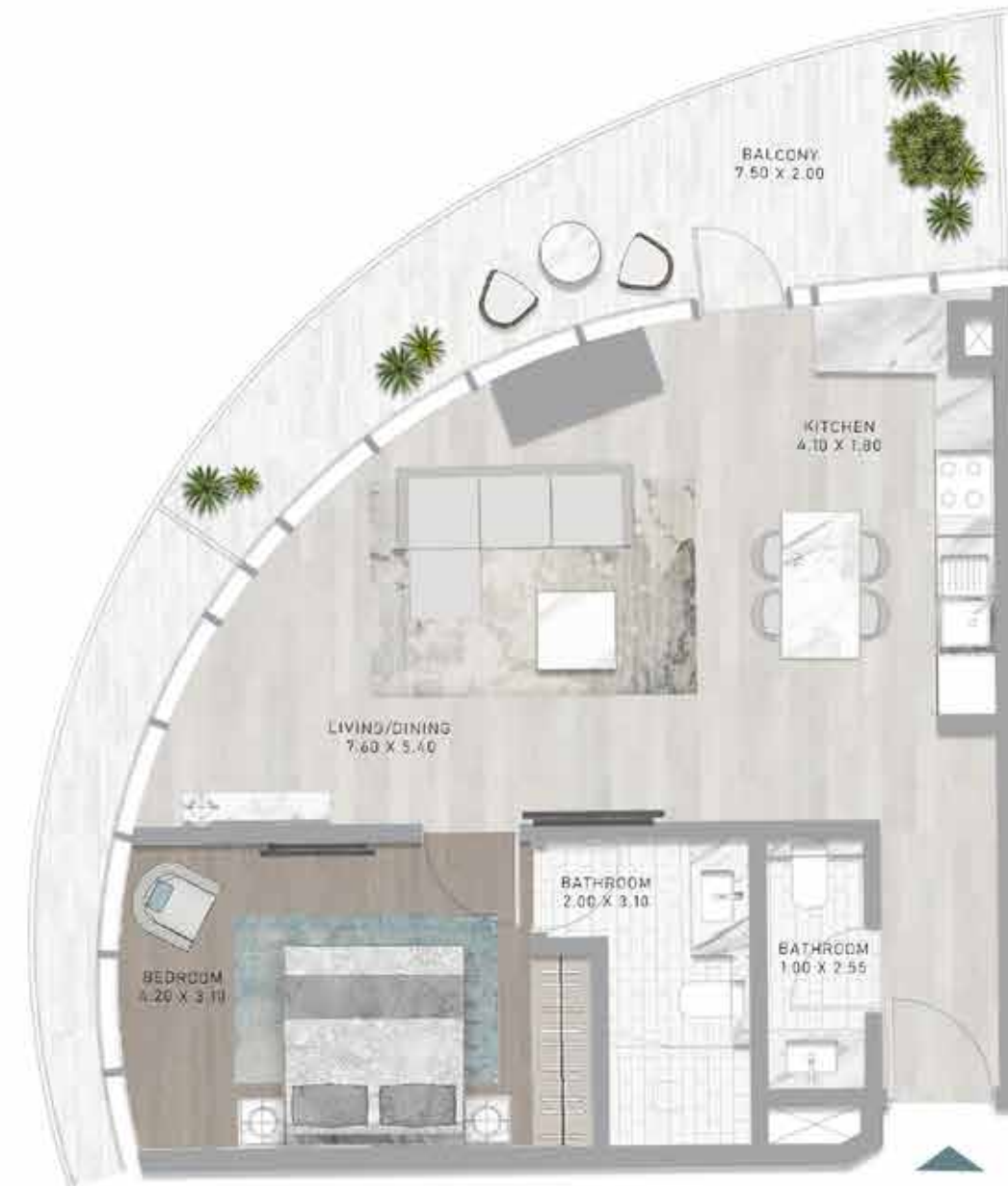
TYPE B1



LEVEL 21

# 1-BEDROOM

TYPE B1-M



LEVEL 21



# 1-BEDROOM

TYPE B2



LEVEL 22

# 1-BEDROOM

TYPE B2-M



LEVEL 22



# 1-BEDROOM

TYPE B3



LEVEL 23

# 1-BEDROOM

TYPE B3-M



LEVEL 23



# 1-BEDROOM

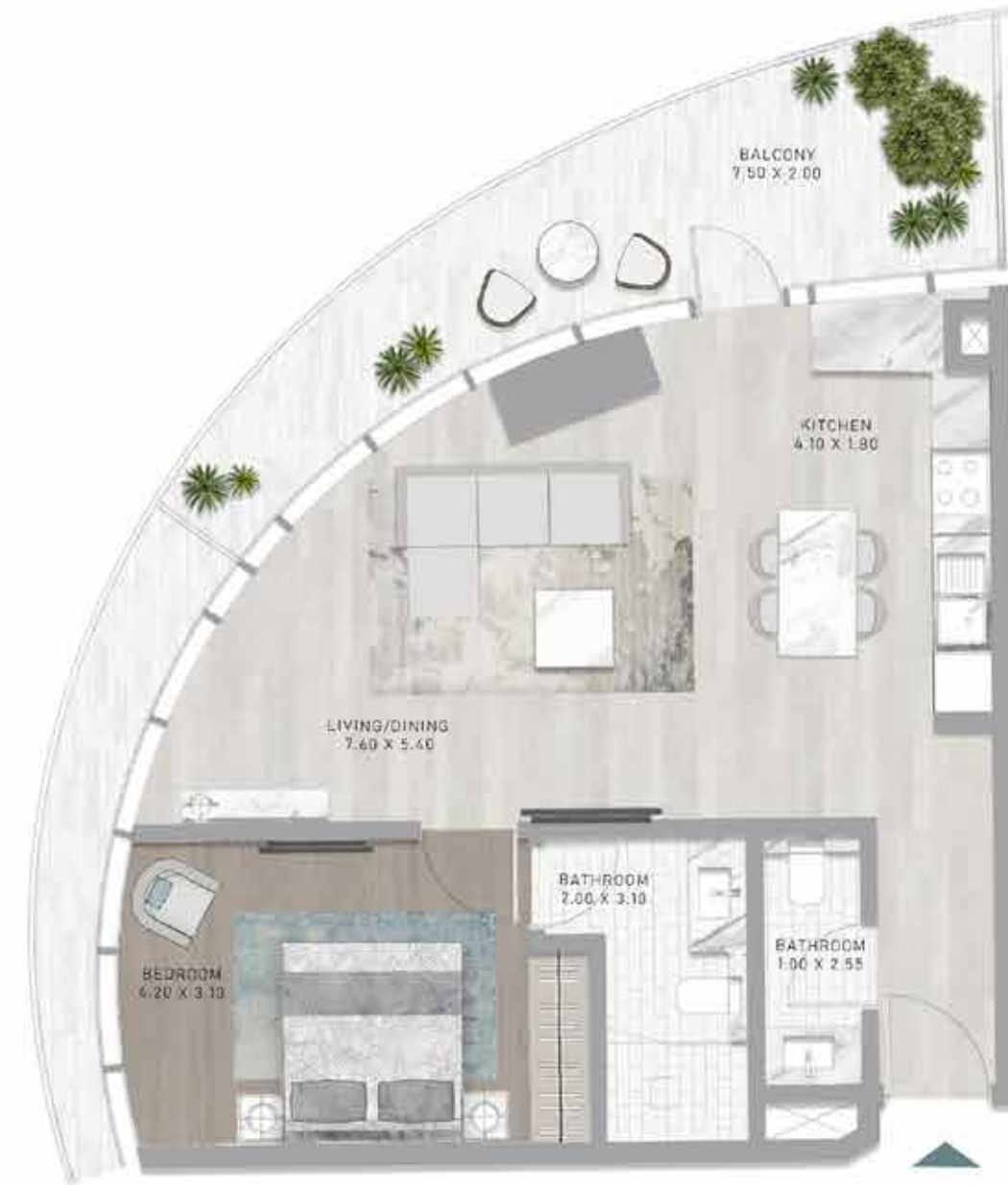
TYPE B4



LEVEL 24

# 1-BEDROOM

TYPE B4-M



LEVEL 24



# 1-BEDROOM

TYPE B5



LEVEL 25

# 1-BEDROOM

TYPE B5-M



LEVEL 25



# 1-BEDROOM

TYPE B6



LEVEL 26

# 1-BEDROOM

TYPE B6-M



LEVEL 26



# 1-BEDROOM

TYPES C1 - C5



LEVELS 21-25

# 1-BEDROOM

TYPES C1 M - C5 M



LEVELS 21-25



# 1-BEDROOM

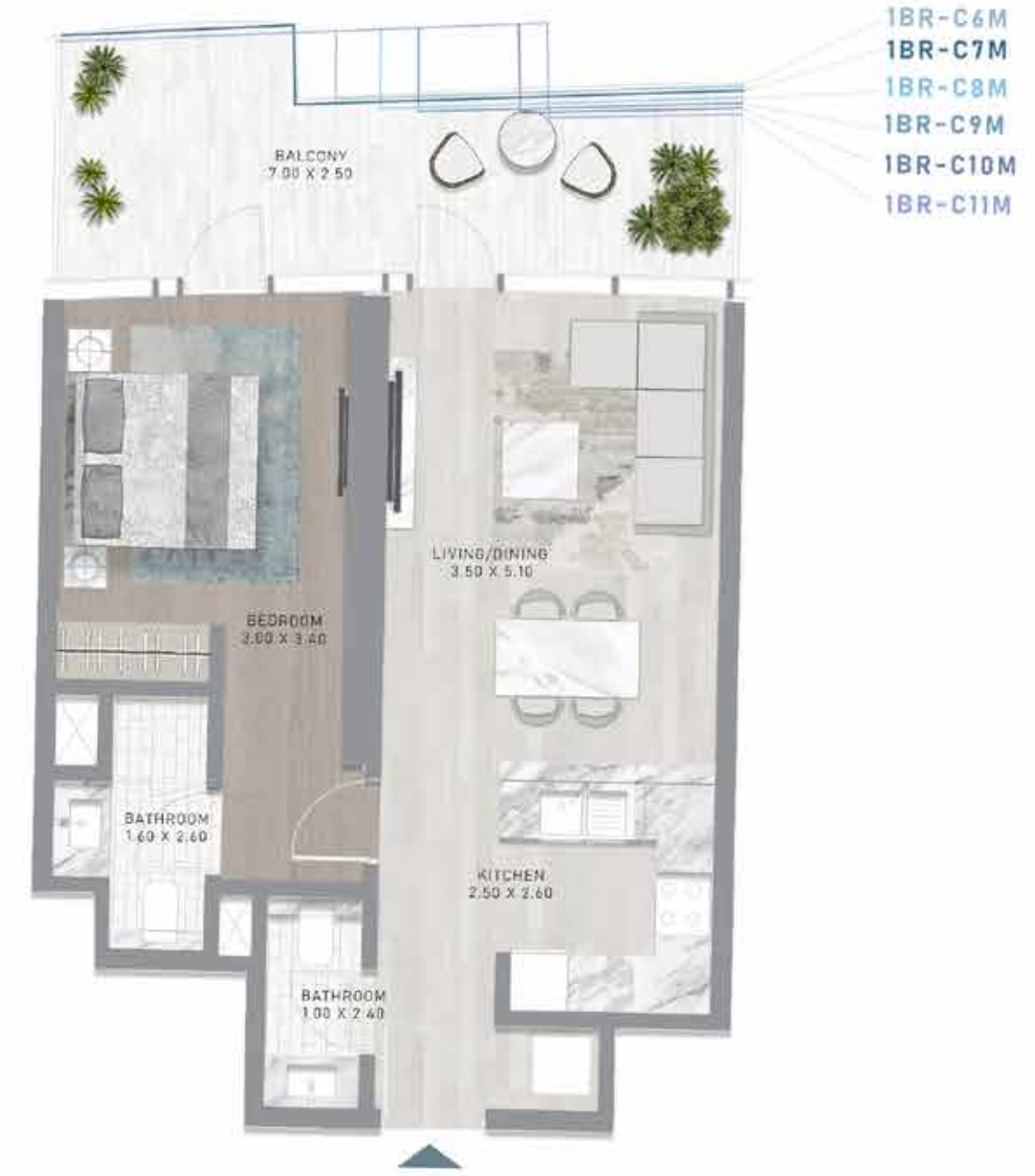
TYPES C6 - C11



LEVELS 26-31

# 1-BEDROOM

TYPES C6 M - C11 M



LEVELS 26-31



# 1-BEDROOM

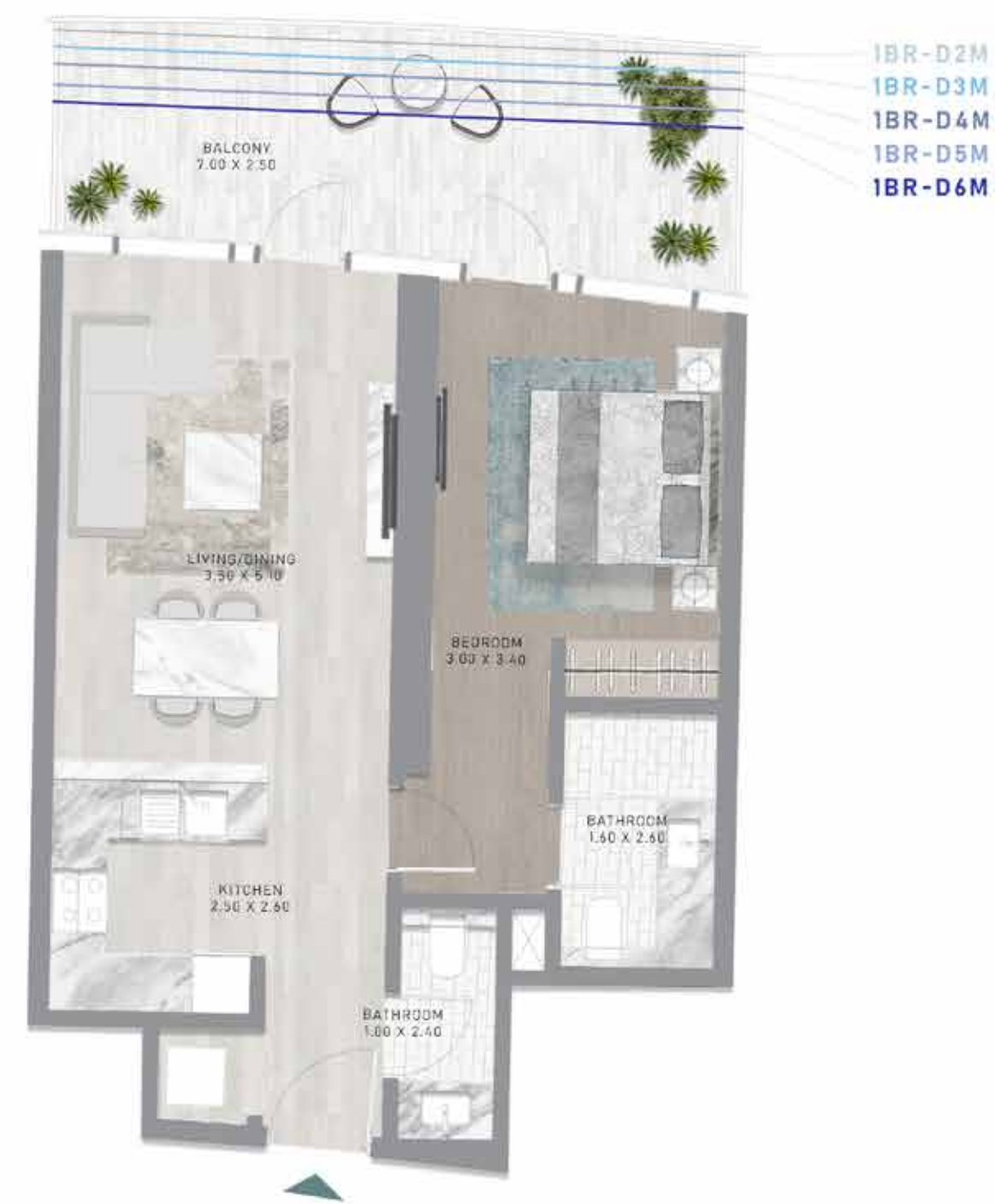
TYPES D1 - D6



LEVELS 21-26

# 1-BEDROOM

TYPES D1 M - D6 M



LEVELS 21-26



# 1-BEDROOM

TYPE E1



LEVEL 27

# 1-BEDROOM

TYPE E1-M

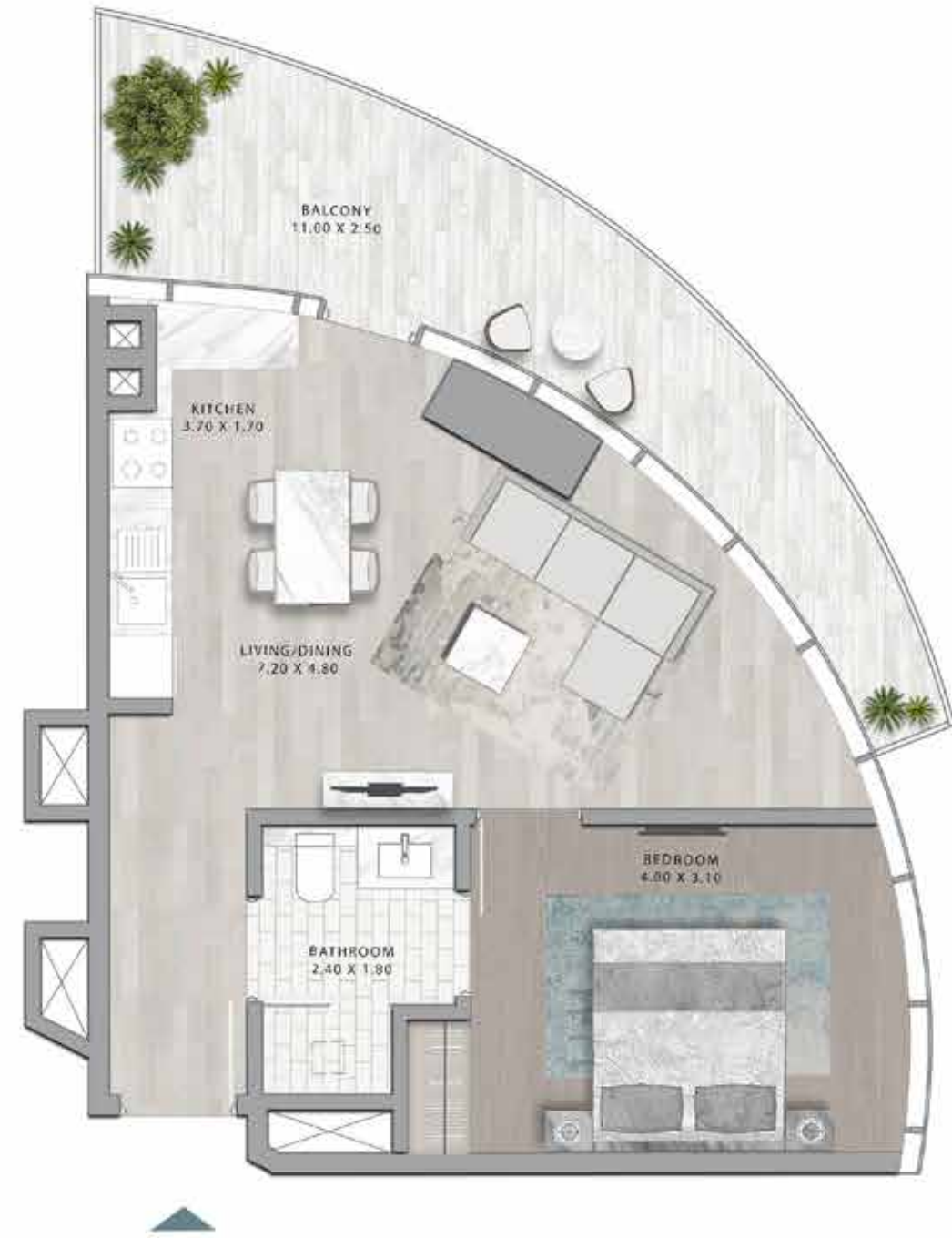


LEVEL 27



# 1-BEDROOM

TYPE E2



LEVEL 28

# 1-BEDROOM

TYPE E2-M

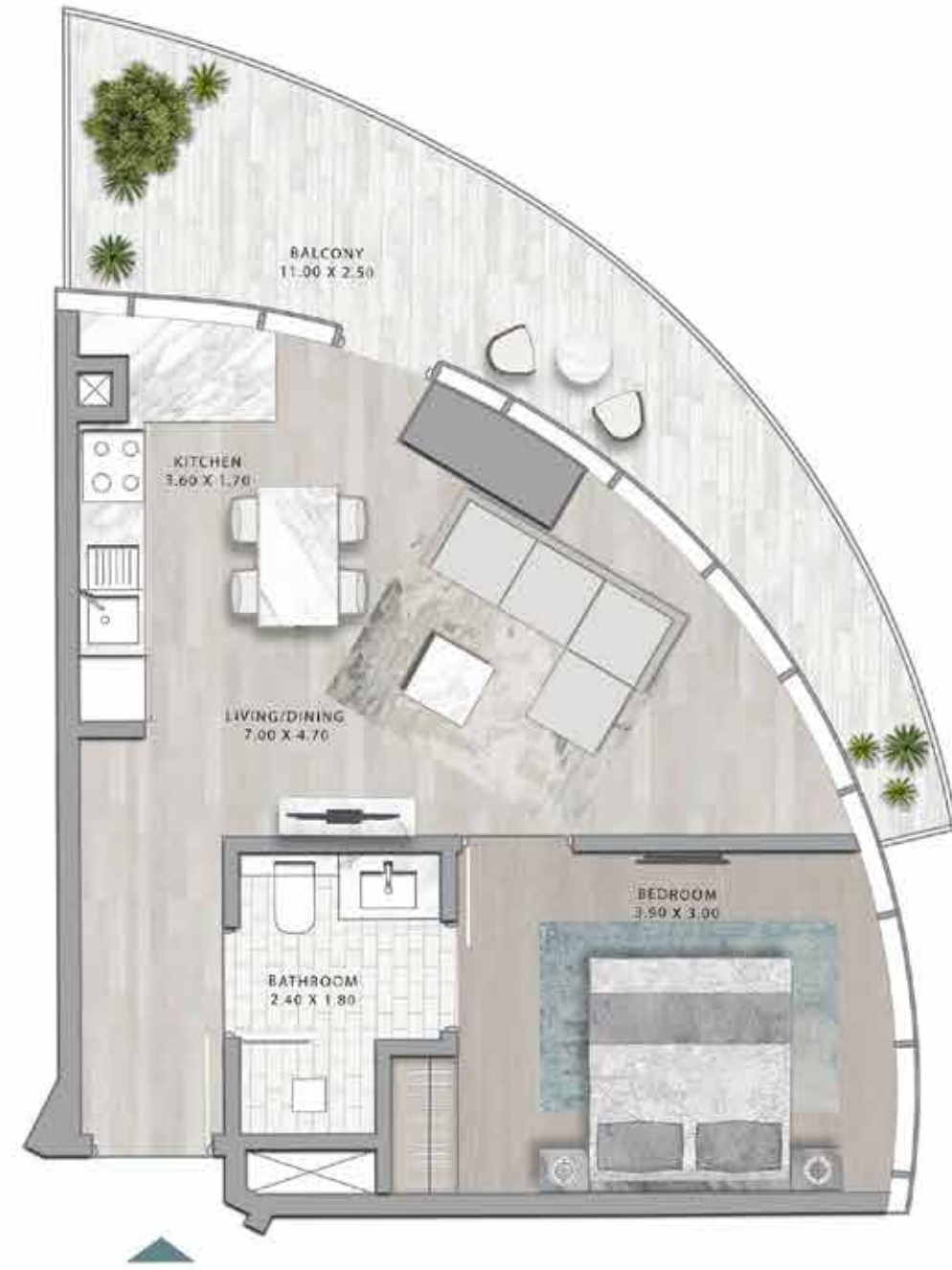


LEVEL 28



# 1-BEDROOM

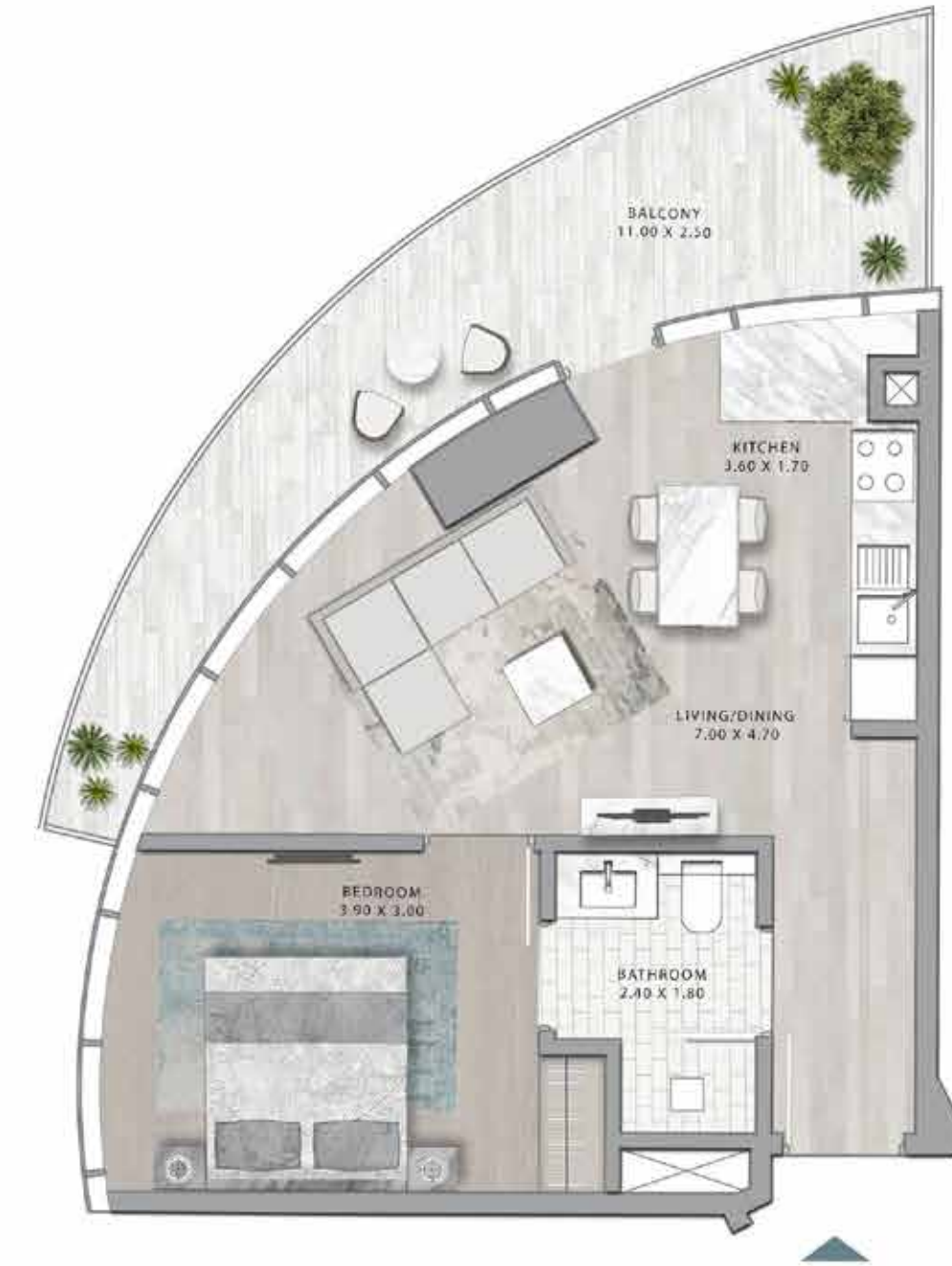
TYPE E3



LEVEL 29

# 1-BEDROOM

TYPE E3-M



LEVEL 29



# 1-BEDROOM

TYPE E4



LEVEL 30

# 1-BEDROOM

TYPE E4-M



LEVEL 30



# 1-BEDROOM

TYPE E5



LEVEL 31

# 1-BEDROOM

TYPE E5-M

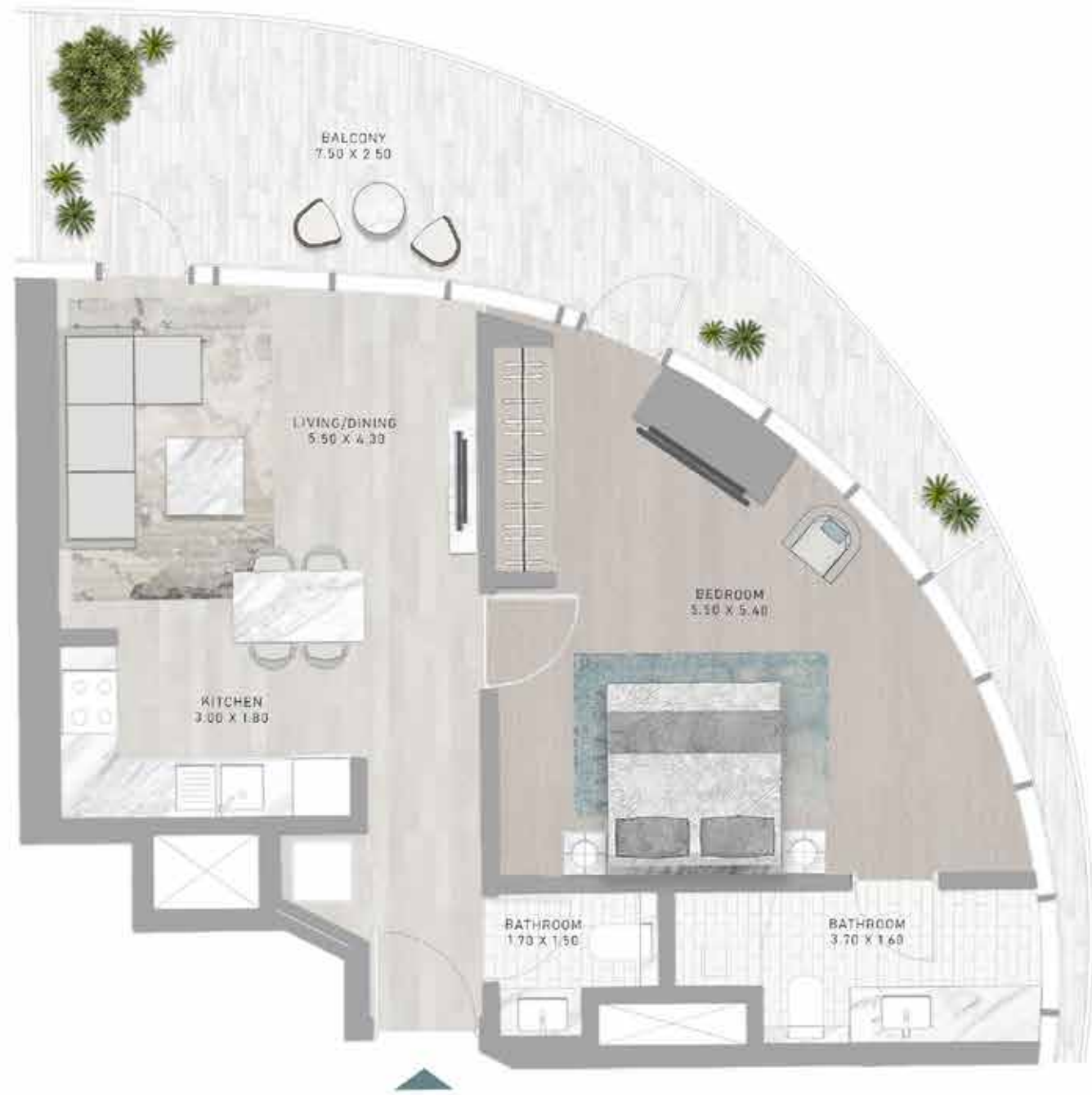


LEVEL 31



# 1-BEDROOM

TYPE G1



LEVEL 32

# 1-BEDROOM

TYPE G1-M



LEVEL 32



# 1-BEDROOM

TYPE G2



LEVEL 33

# 1-BEDROOM

TYPE G2-M



LEVEL 33



# 1-BEDROOM

TYPE G3



LEVEL 34

# 1-BEDROOM

TYPE G3-M



LEVEL 34



# 1-BEDROOM

TYPE G4



LEVEL 35

# 1-BEDROOM

TYPE G4-M



LEVEL 35



# 1-BEDROOM

TYPE G5



LEVEL 36

# 1-BEDROOM

TYPE G5-M

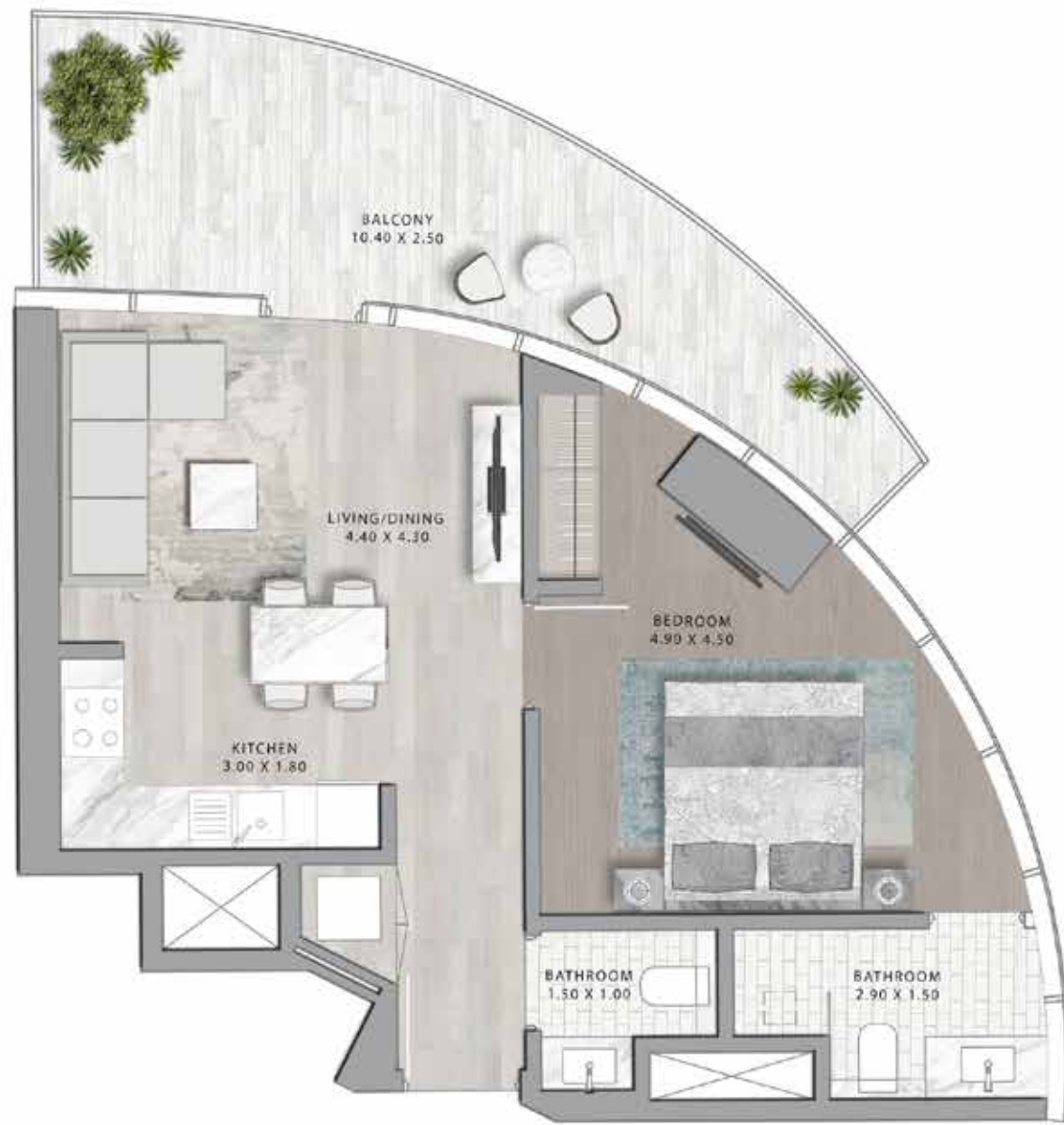


LEVEL 36



# 1-BEDROOM

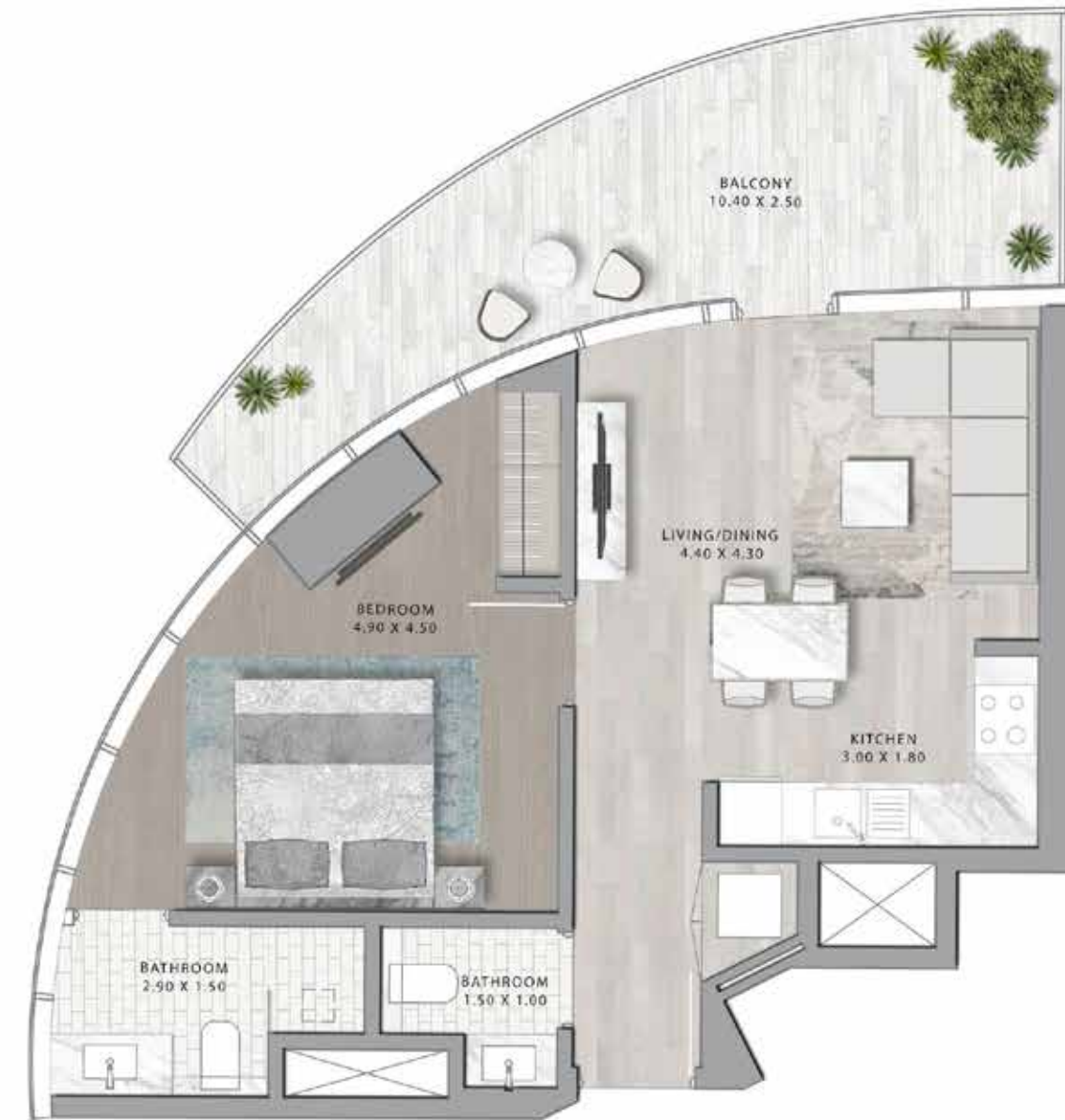
TYPE G6



LEVEL 37

# 1-BEDROOM

TYPE G6-M



LEVEL 37



# 1-BEDROOM

TYPE G7



LEVEL 38

# 1-BEDROOM

TYPE G7 M



LEVEL 38



# 1-BEDROOM

TYPES H1 - H7

# 1-BEDROOM

TYPES H1 M - H7 M



LEVELS 32-38

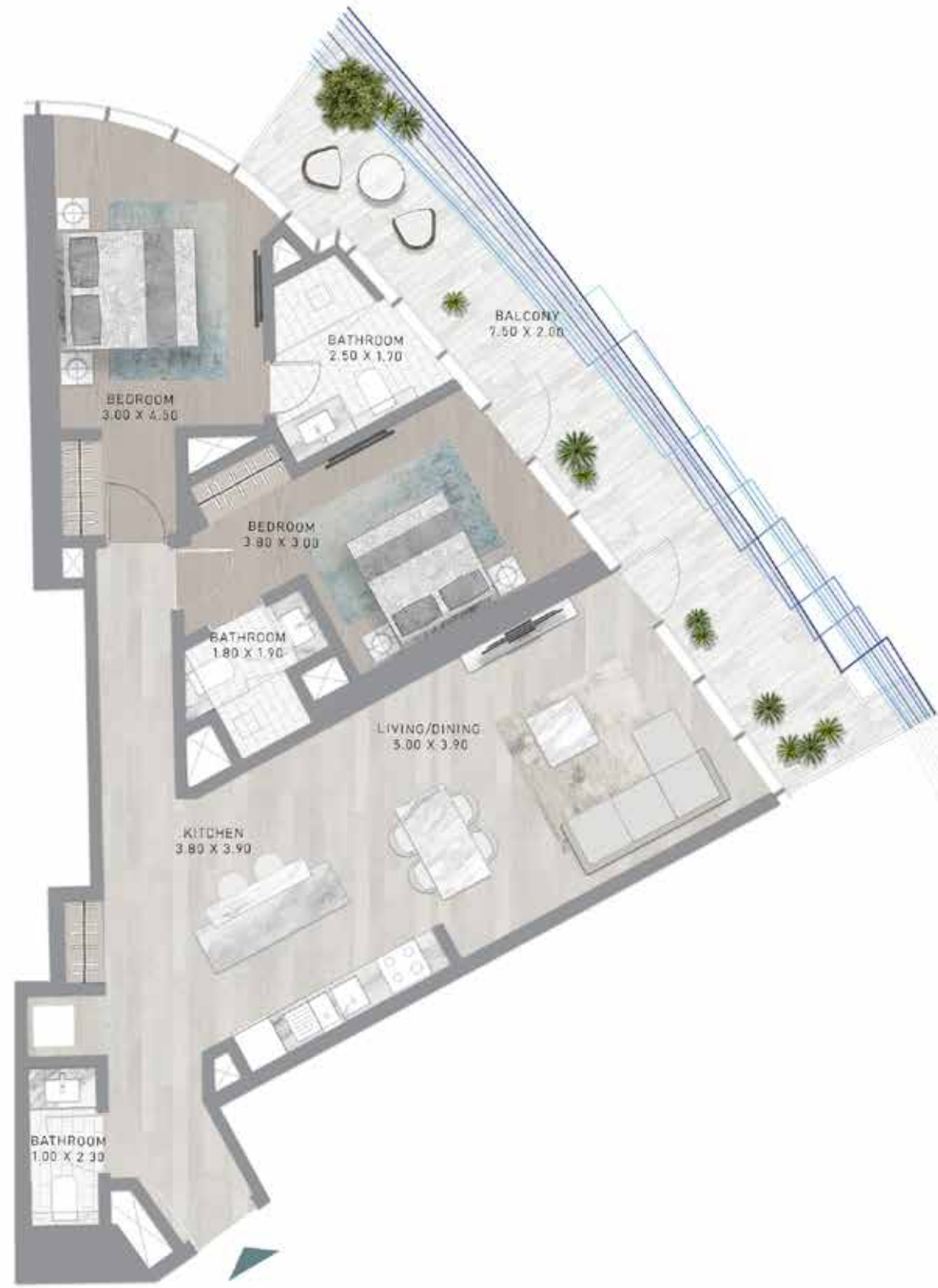


LEVELS 32-38



# 2-BEDROOM

TYPES A1 - A18



- 2BR-A2
- 2BR-A3
- 2BR-A4
- 2BR-A5
- 2BR-A6,A7
- 2BR-A8,A9
- 2BR-A10,A11,A12,A13
- 2BR-A14,A15,A16
- 2BR-A17,A18



LEVELS 2-19

# 2-BEDROOM

TYPES A1 M - A18 M



- 2BR-A2M
- 2BR-A3M
- 2BR-A4M
- 2BR-A5M
- 2BR-A6M,A7M
- 2BR-A8M,A9M
- 2BR-A10M,A11M,A12M,A13M
- 2BR-A14M,A15M,A16M
- 2BR-A17M,A18M



LEVELS 2-19



# 2-BEDROOM

TYPE B1



LEVEL 21

# 2-BEDROOM

TYPE B1-M

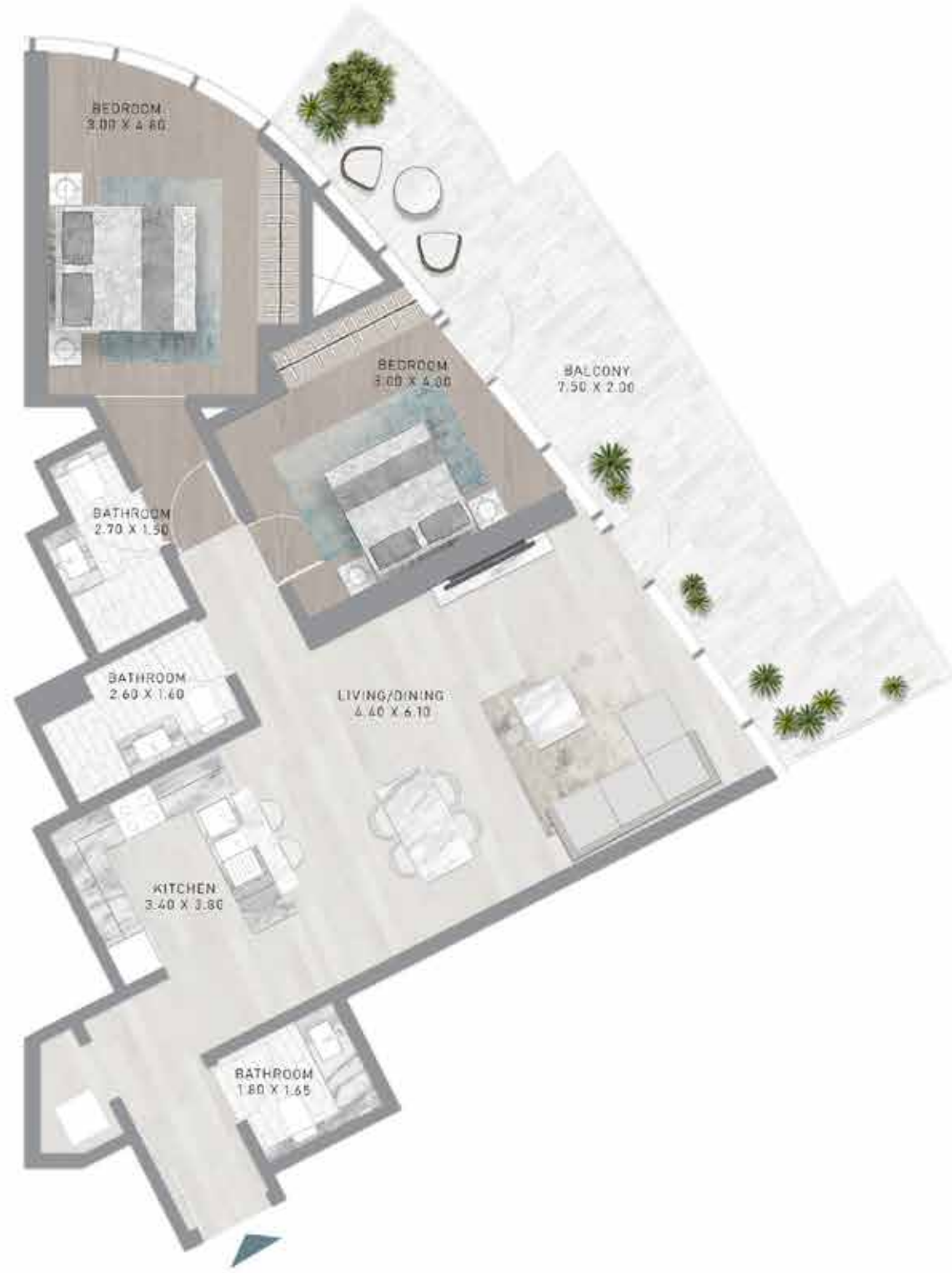


LEVEL 21



# 2-BEDROOM

TYPE B2



LEVEL 22

# 2-BEDROOM

TYPE B2-M

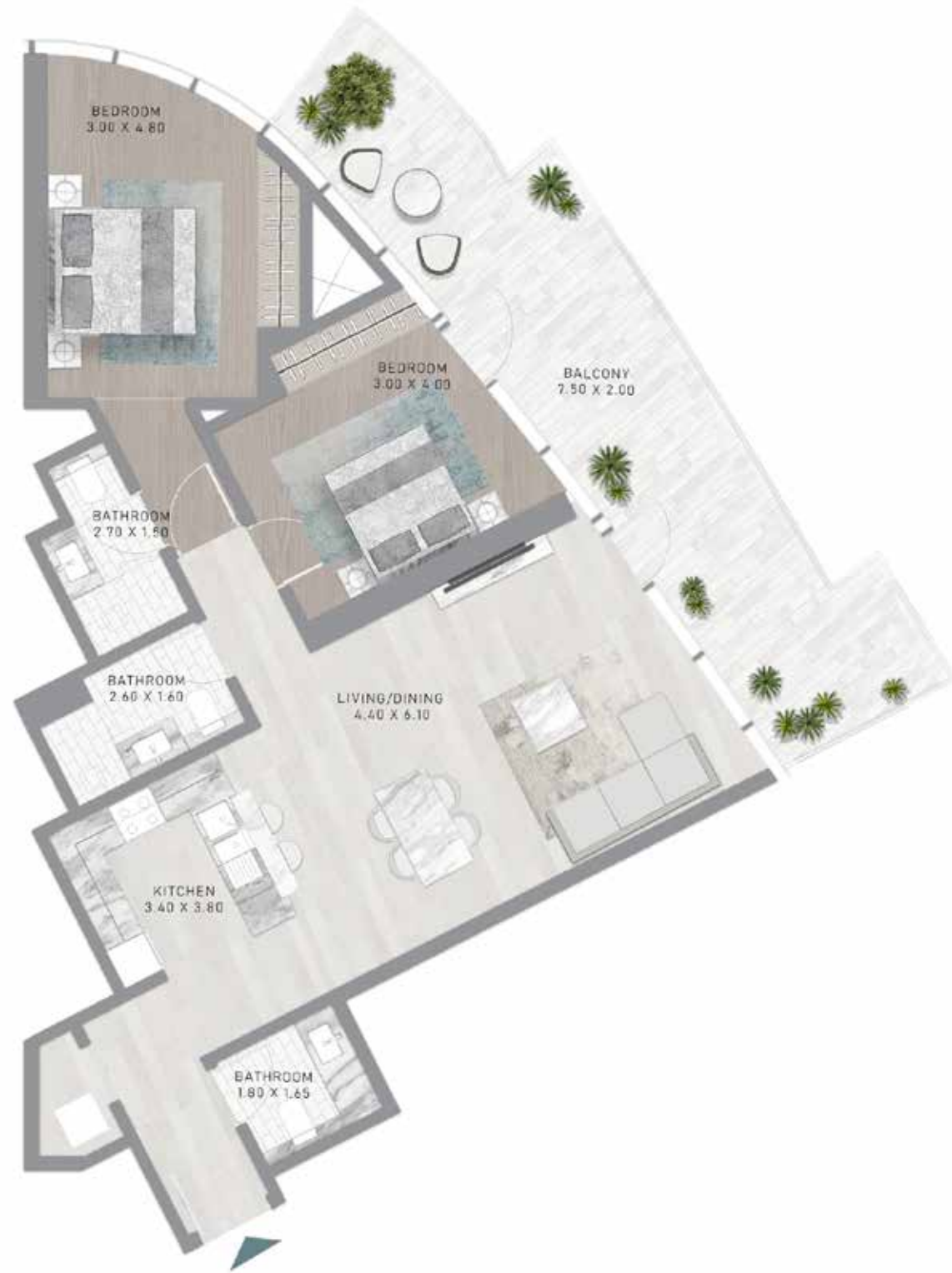


LEVEL 22



# 2-BEDROOM

TYPE B3



LEVEL 23

# 2-BEDROOM

TYPE B3-M

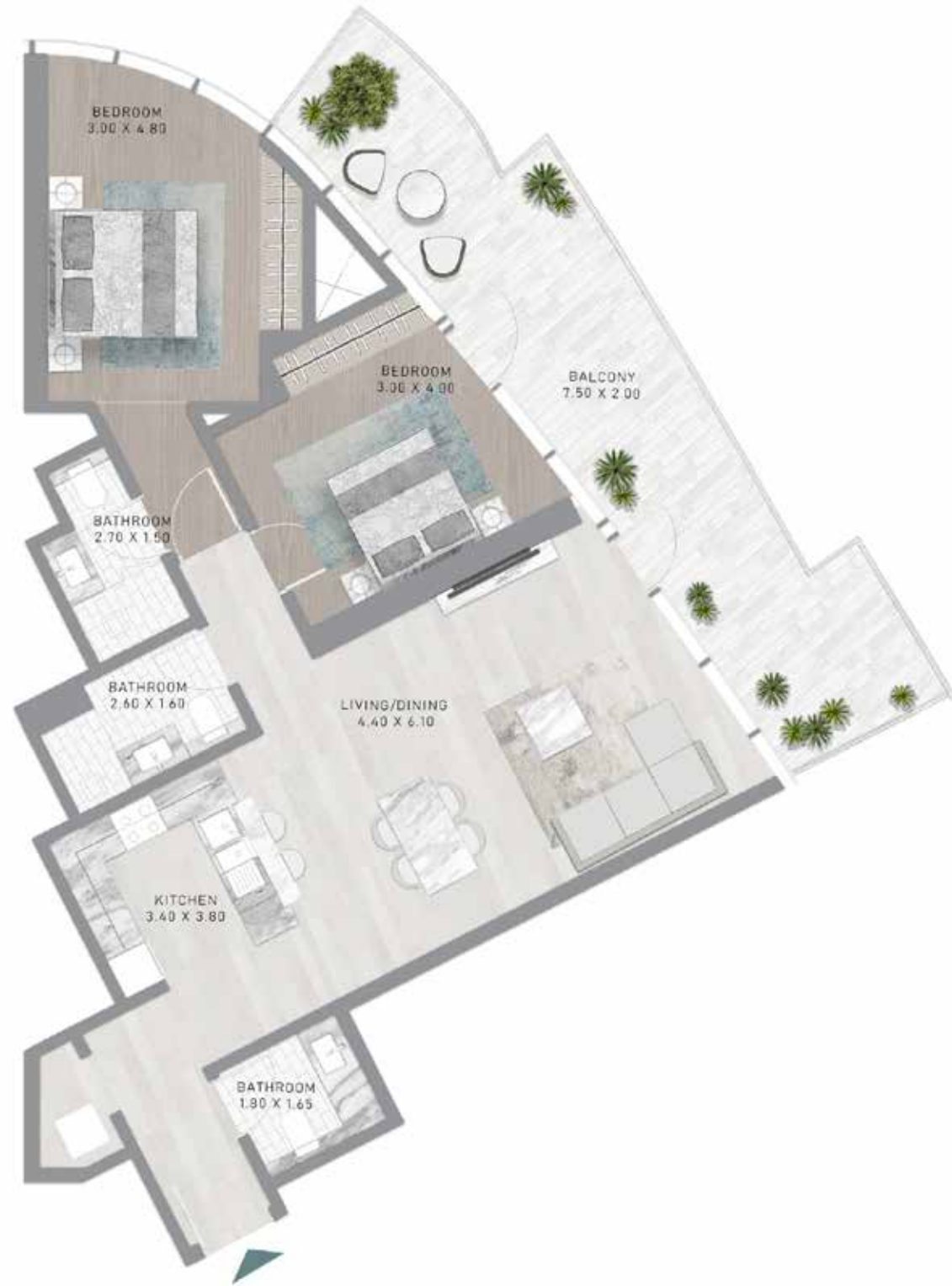


LEVEL 23



# 2-BEDROOM

TYPE B4



LEVEL 24

# 2-BEDROOM

TYPE B4-M

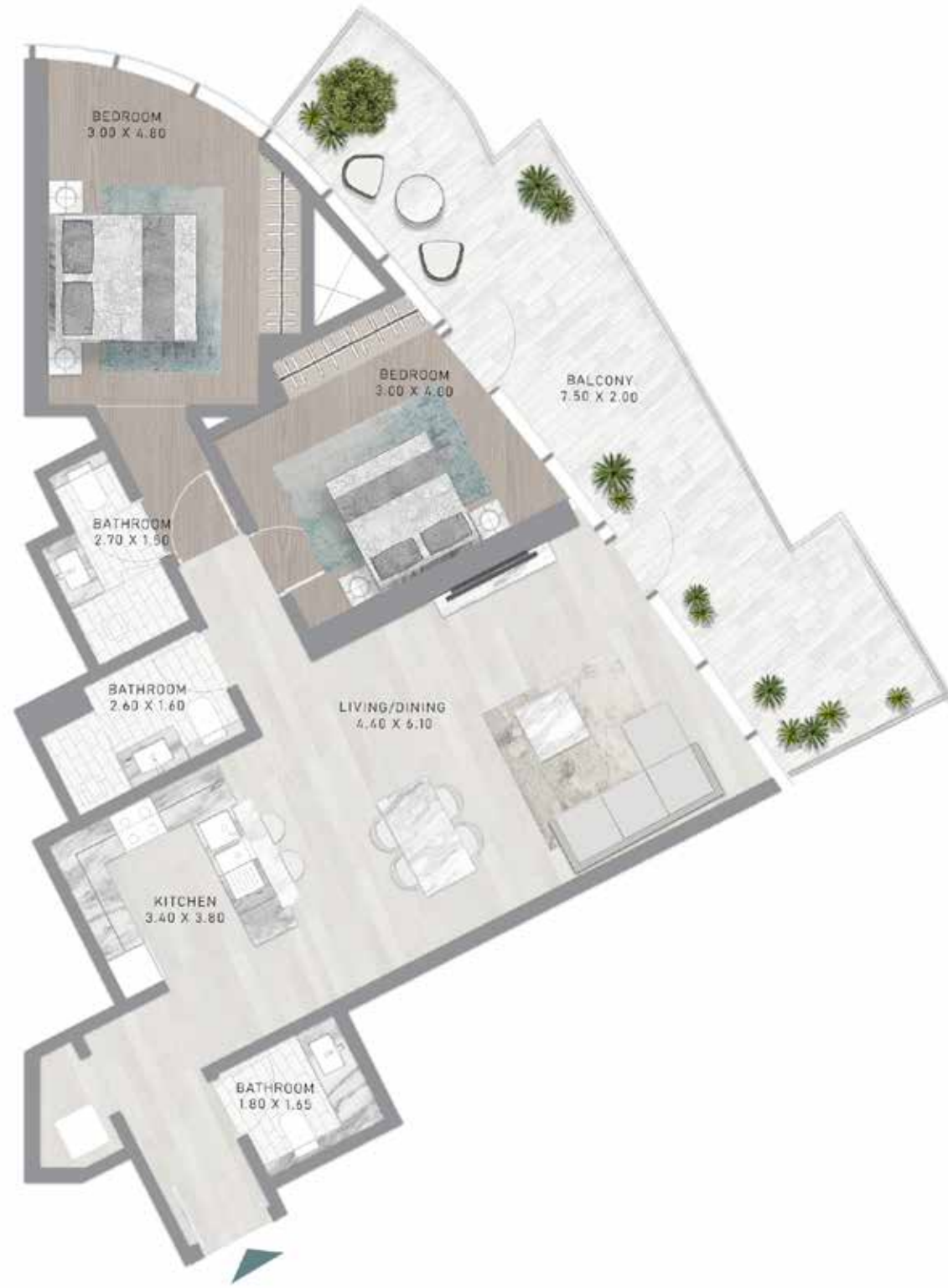


LEVEL 24



# 2-BEDROOM

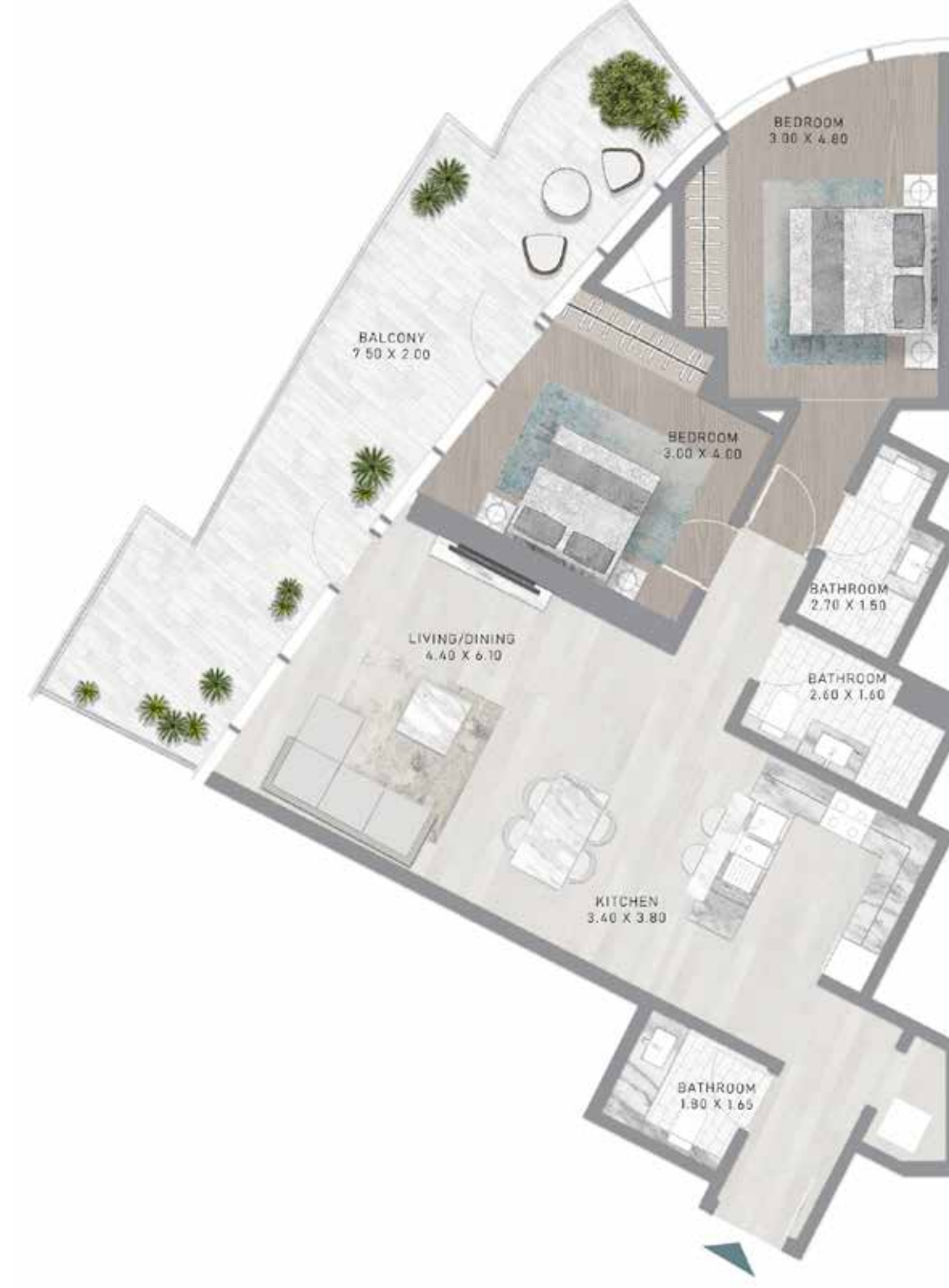
TYPE B5



LEVEL 25

# 2-BEDROOM

TYPE B5-M

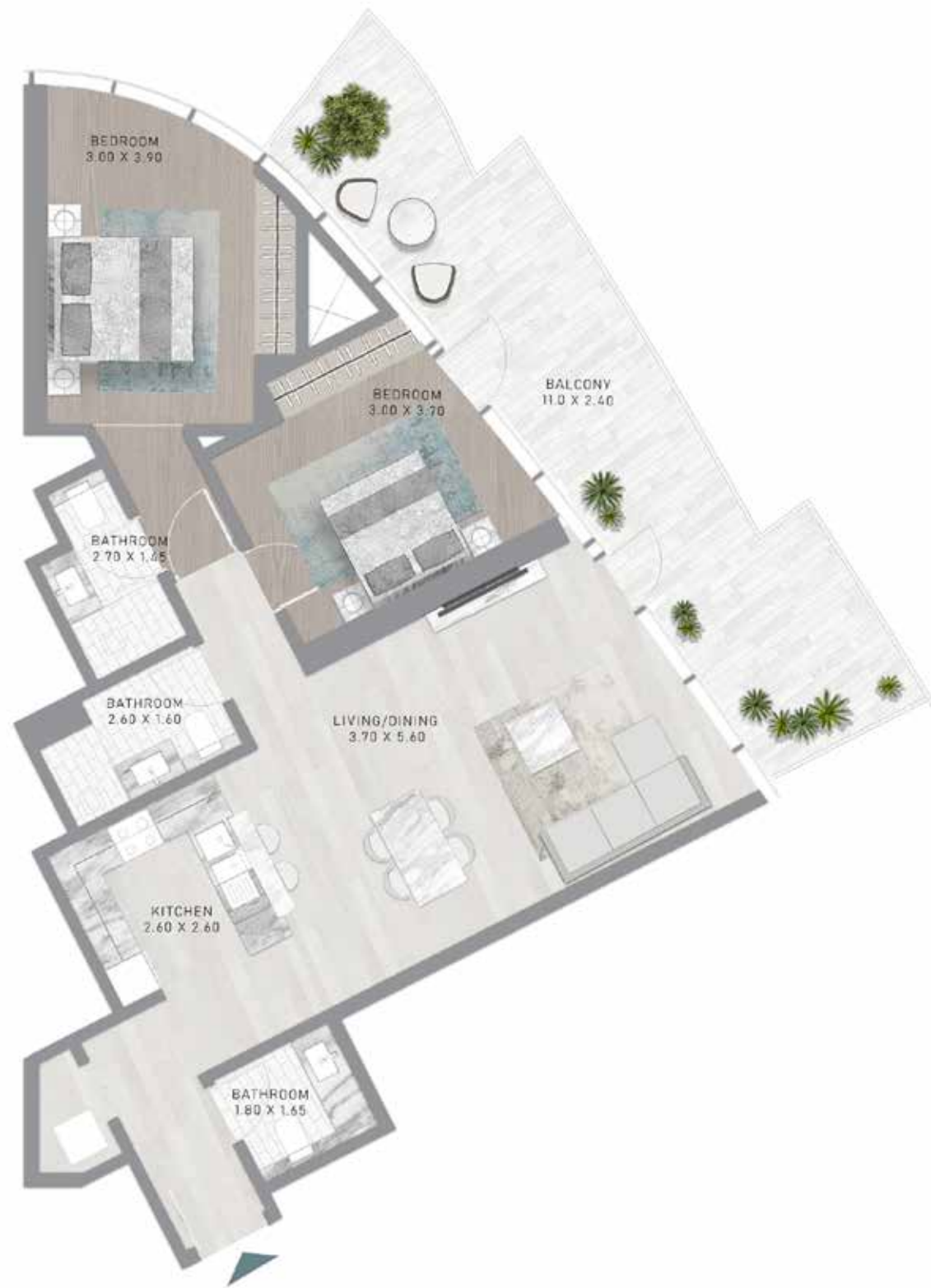


LEVEL 25



# 2-BEDROOM

TYPE B6



LEVEL 26

# 2-BEDROOM

TYPE B6-M



LEVEL 26



# 2-BEDROOM

TYPE C1



LEVEL 27

# 2-BEDROOM

TYPE C1-M



LEVEL 27



# 2-BEDROOM

TYPE C2



LEVEL 28

# 2-BEDROOM

TYPE C2-M



LEVEL 28



# 2-BEDROOM

TYPE C3

CANAL HEIGHTS BY DE GRISOGONO



LEVEL 29

# 2-BEDROOM

TYPE C3-M

CANAL HEIGHTS BY DE GRISOGONO



LEVEL 29



# 2-BEDROOM

TYPE C4



LEVEL 30

# 2-BEDROOM

TYPE C4-M



LEVEL 30



# 2-BEDROOM

TYPE C5



LEVEL 31

# 2-BEDROOM

TYPE C5-M

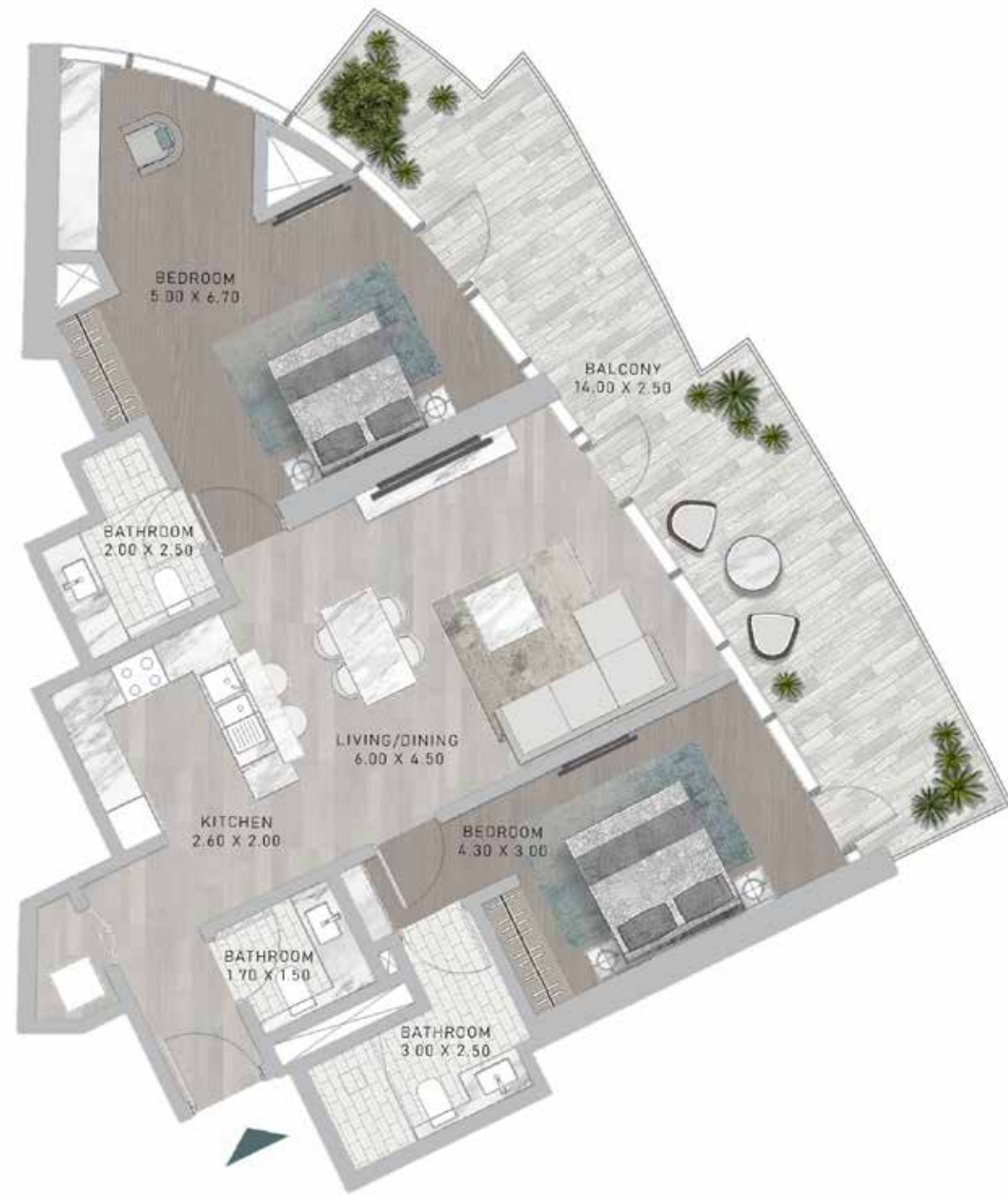


LEVEL 31



# 2-BEDROOM

TYPE D1



LEVEL 32

# 2-BEDROOM

TYPE D1-M



LEVEL 32



# 2-BEDROOM

TYPE D2



LEVEL 33

# 2-BEDROOM

TYPE D2-M



LEVEL 33



# 2-BEDROOM

TYPE D3



LEVEL 34

# 2-BEDROOM

TYPE D3-M



LEVEL 34



# 2-BEDROOM

TYPE D4



LEVEL 35

# 2-BEDROOM

TYPE D4-M

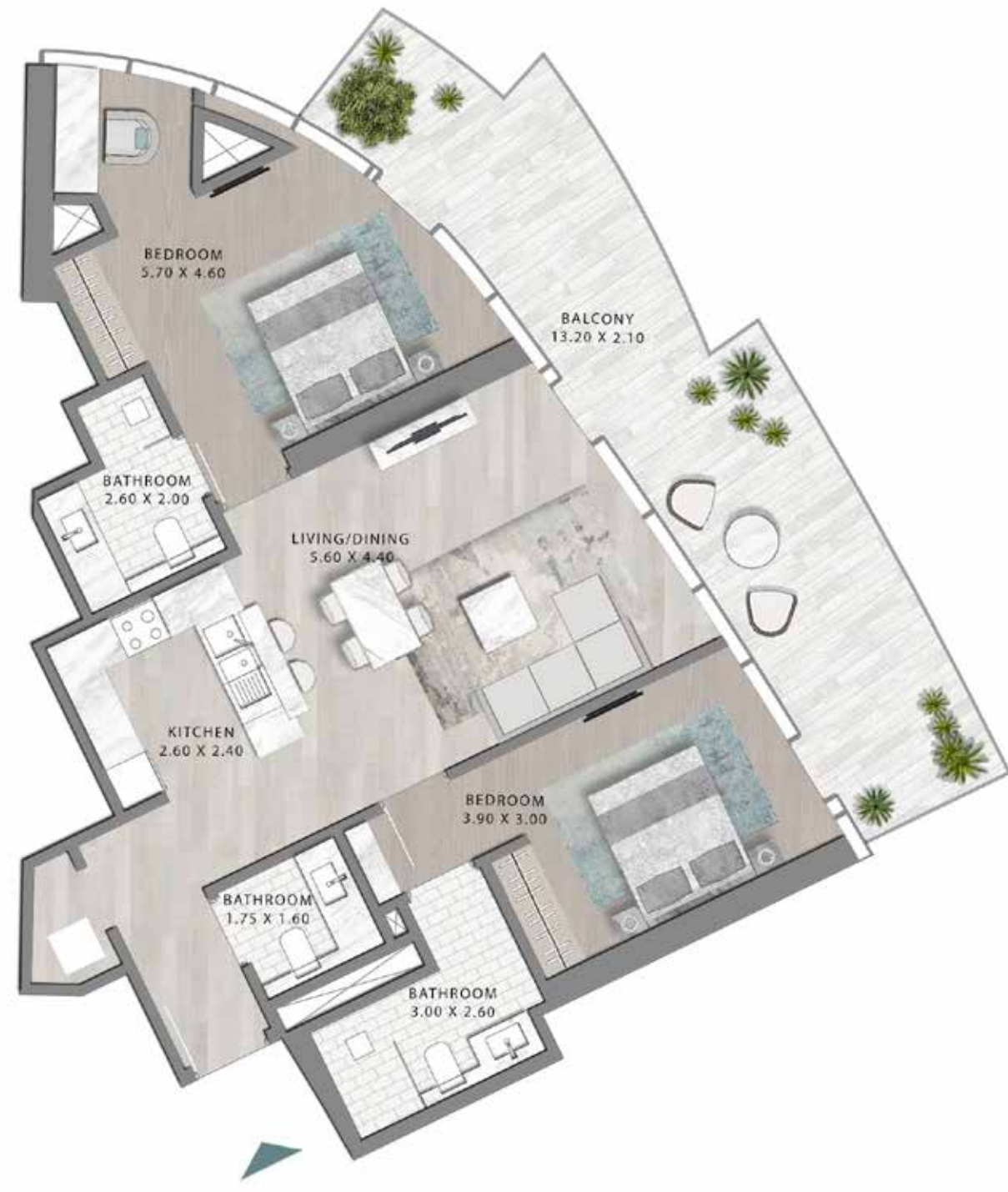


LEVEL 35



# 2-BEDROOM

TYPE D5



LEVEL 36

# 2-BEDROOM

TYPE D5-M



LEVEL 36



# 2-BEDROOM

TYPE D6



LEVEL 37

# 2-BEDROOM

TYPE D6-M



LEVEL 37



# 2-BEDROOM

TYPE D7



LEVEL 38

# 2-BEDROOM

TYPE D7 M



LEVEL 38



# DAMAC PROPERTIES

## LIVE THE LUXURY

DAMAC Properties has been at the forefront of the Middle East's luxury real estate market since 2002, delivering award-winning residential, commercial and leisure properties across the region, including the UAE, Saudi Arabia, Qatar, Jordan, Lebanon, Iraq, Maldives, Canada, the United States, as well as the United Kingdom. Since then, the company has delivered approximately 42,000 homes, with a development portfolio of more than 28,000 at various stages of planning and progress.\*

Joining forces with some of the world's most eminent fashion and lifestyle brands, DAMAC has brought new and exciting living concepts to the market in collaborations that include a golf course managed by The Trump Organization, and luxury homes in association with Versace, Cavalli, Just Cavalli, de Grisogono, Paramount Hotels & Resorts, Rotana and the Radisson Hotel Group. With a consistent vision, and strong momentum, DAMAC Properties is building the next generation of Middle Eastern luxury living.

DAMAC places a great emphasis on philanthropy and corporate social responsibility. The Hussain Sajwani – DAMAC Foundation, a joint initiative between DAMAC Group and Hussain Sajwani, recently announced the launch of the 'Fresh Slate' in collaboration with the Dubai Police General Headquarters, aimed at aiding detainees in Dubai's Punitive and Correctional Institutions who have been charged with petty offences.

The HSDF has also pledged AED 5 million for the 1 Billion Meals initiative launched by Vice President and Prime Minister of the UAE, and Ruler of Dubai, His Highness Sheikh Mohammed bin Rashid Al Maktoum, at the start of Ramadan 2022, aimed at providing meals to underprivileged communities in 50 countries across the world.

DAMAC has also supported the vision of Sheikh Mohammed to train one million Arab coders in creating an empowered society through learning and skills development, an initiative that successfully wrapped up in May 2022.

# LUXURY BY APPOINTMENT

## CONTACT US AT ANY OF OUR OFFICES OR VISIT [DAMACPROPERTIES.COM](https://damacproperties.com)

### UNITED ARAB EMIRATES

Dubai

Tel: 800-DAMAC (800-32622)

E-mail: [dubai@damacgroup.com](mailto:dubai@damacgroup.com)

Park Towers – Sales Centre

Dubai International Financial Centre

AYKON City – Sales Centre

Floor 63, Sheikh Zayed Road

DAMAC Hills – Sales Centre

Sheikh Zayed bin Hamdan Al Nahyan Street

DAMAC Hills – Sales Centre

Golf Veduta, Townhouse TH2

DAMAC Hills – Sales Centre

Bellavista (Carson Building)

DAMAC Hills 2 – Sales Centre

Amazonia Cluster, Villa 333

DAMAC Hills 2 – Sales Centre

Water Town

### QATAR

Building 90, New Solta Area

Ali bin Abi Talib Street

Next to Omar bin Al Khattab

Health Centre

Tel: +974 44 666 986

Fax: +974 44 554 576

E-mail: [doha@damacgroup.com](mailto:doha@damacgroup.com)

### KINGDOM OF SAUDI ARABIA

DAMAC Towers Riyadh

South Tower

Olaya District

King Fahd Road

PO Box 102460

Tel: +966 11 835 0300

E-mail: [ksa@damacgroup.com](mailto:ksa@damacgroup.com)

### TURKEY

Levazim, Mah. Koru Sk.

Zorlu Centre No. 2

IC Kapi No. 347, Beşiktaş/İstanbul

Turkey

Tel: +90 212 892 0327

Fax: +90 212 890 7184

E-mail: [turkey.office@damacgroup.com](mailto:turkey.office@damacgroup.com)

### LEBANON

Unit 1801, 18th Floor

DAMAC Tower

Omar Daouk Street

Mina El Hosn, Beirut Central District

Tel: +961 81 647 200

E-mail: [beirut@damacgroup.com](mailto:beirut@damacgroup.com)

### JORDAN

Opposite Abdali Mall Gate #1

Al Istithmar Street

Abdali Project, Amman

Tel: +962 6 510 7000

Fax: +962 6 565 7896

E-mail: [amman@damacgroup.com](mailto:amman@damacgroup.com)

### UNITED KINGDOM

4th Floor, 100 Brompton Road

Opposite Harrods

Knightsbridge, London

SW3 1ER, United Kingdom

Tel: +44 (0) 207 590 8050

E-mail: [sales@damactower.co.uk](mailto:sales@damactower.co.uk)





***DAMAC***